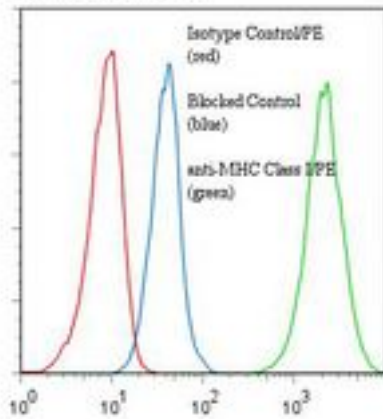


MHC Class I Mouse anti-Human Monoclonal (RPE) (3F10) Antibody - LS-C134155 - LSBio	
CatalogID:	LS-C134155
Target:	MHC Class I
Host	MHC Class I antibody was produced in Mouse
Clonality:	Monoclonal
Isotype:	IgG2a
Clone Name:	3F10
Conjugations:	R. Phycoerythrin (RPE)
Immunogen Species:	MHC Class I antibody was raised against Human
Antigen Type:	Cells
Immunogen:	MHC Class I antibody was raised against human HSB-2 T cell line.
Specificity:	Monomorphic Class I epitope on the alpha chain.
Reactivity:	Human
Purification:	Gel filtration
Presentation:	50 mM sodium phosphate, pH 7.5, 500 mM potassium chloride, 150 mM sodium chloride, 15% Glycerol, 0.2% BSA, 0.04% sodium azide
Recommended Storage:	Store at +4°C. Do not freeze. Product is photosensitive and should be protected from light.
Usage Summary:	Function: Cytotoxic in the presence of complement.
Uses:	IHC, Flow Cytometry, ELISA, Functional Assay (Optimal dilution to be determined by the researcher)
Size:	120 tst

Flow Cytometry Image:

Binding of anti-MHC Class I/PE to human HPB-MLT cells



Flow cytometry of MHC Class I antibody

Requested From:

Japan

Laboratory Reagent For In Vitro Research Use Only

Not for resale without prior written consent from LifeSpan BioSciences, Inc.

Created on 9/25/2014

© 2014 LifeSpan BioSciences