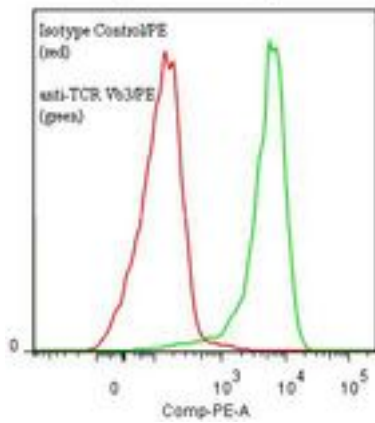


**T Cell Receptor Vbeta 3 Mouse anti-Human Monoclonal (RPE) (Jovi-3) Antibody - LS-C134146 - LSBio**

<b>CatalogID:</b>	LS-C134146
<b>Target:</b>	T Cell Receptor Vbeta 3
<b>Host</b>	Mouse
<b>Clonality:</b>	Monoclonal
<b>Isotype:</b>	IgG2a,I
<b>Clone Name:</b>	Jovi-3
<b>Conjugations:</b>	R. Phycoerythrin (RPE)
<b>Immunogen Species:</b>	Human
<b>Antigen Type:</b>	Cells
<b>Immunogen:</b>	Human HA1.7 TCR beta chain expressed on transgenic mouse cells.
<b>Specificity:</b>	Human V beta 3 TCR gene product and reacts with 1-10 of T cells in normal human blood.
<b>Reactivity:</b>	Human
<b>Purification:</b>	Gel filtration
<b>Presentation:</b>	50 mM sodium phosphate, pH 7.5, 500 mM potassium chloride, 150 mM sodium chloride, 15% Glycerol, 0.2% BSA, 0.04% sodium azide
<b>Recommended Storage:</b>	Store at +4°C. Do not freeze. Product is photosensitive and should be protected from light.
<b>Usage Summary:</b>	Function: Mitogenic for T cells expressing TCR V beta 3.
<b>Uses:</b>	Flow Cytometry, Functional Assay (Optimal dilution to be determined by the researcher)
<b>Size:</b>	120 tst

**Flow Cytometry Image:**

Binding of anti-TCR V $\beta$ 3/PE to human CH7C17 (V $\beta$ 3 transfectants)



Flow cytometry of T Cell Receptor Cbeta 3 antibody

**Requested From:**

Japan

Laboratory Reagent For In Vitro Research Use Only

Not for resale without prior written consent from LifeSpan BioSciences, Inc.

Created on 9/25/2014

© 2014 LifeSpan BioSciences