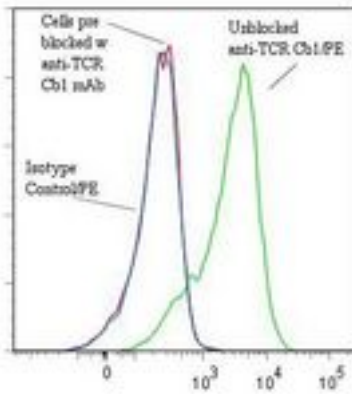


T Cell Receptor Cbeta 1 Mouse anti-Human Monoclonal (RPE) (Jovi-1) Antibody - LS-C134141 - LSBio

CatalogID:	LS-C134141
Target:	T Cell Receptor Cbeta 1
Host	Mouse
Clonality:	Monoclonal
Isotype:	IgG2a
Clone Name:	Jovi-1
Conjugations:	R. Phycoerythrin (RPE)
Immunogen Species:	Human
Immunogen:	Human HA1.7 TCR beta chain expressed on transgenic mouse cells
Specificity:	Human C beta 1 TCR gene product and reacts with 50-75% of T cells in normal human blood.
Reactivity:	Human
Purification:	Protein A purified
Presentation:	50 mM sodium phosphate, pH 7.5, 100 mM potassium chloride, 150 mM sodium chloride, 15% Glycerol, 0.2% BSA, 0.04% sodium azide
Recommended Storage:	Store at +4°C. Do not freeze. Product is photosensitive and should be protected from light.
Usage Summary:	Function: Mitogenic for T cells expressing TCR C beta 1.
Uses:	Flow Cytometry, Functional Assay (Optimal dilution to be determined by the researcher)
Size:	120 tst

Flow Cytometry Image:

Binding of anti-TCR Cb1/R-PE to human Jurkat Cells



Flow cytometry of T Cell Receptor Cbeta 1 antibody

Requested From:

Japan

Laboratory Reagent For In Vitro Research Use Only

Not for resale without prior written consent from LifeSpan BioSciences, Inc.

Created on 9/25/2014

© 2014 LifeSpan BioSciences