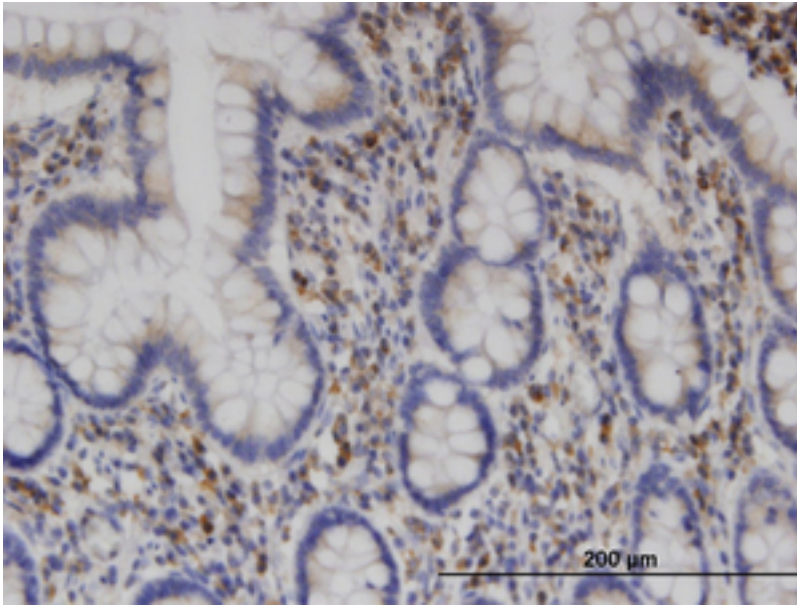


CLINT1 Mouse anti-Human Monoclonal (1E6) Antibody - LS-C134005 - LSBio

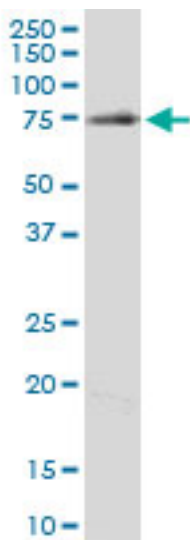
CatalogID:	LS-C134005
Target:	clathrin interactor 1 (CLINT1)
Synonyms:	CLINT1 Antibody, CLINT Antibody, Enthoprotin Antibody, Epsin-4 Antibody, Epsin-related protein Antibody, EPNR Antibody, EpsinR Antibody, EPN4 Antibody, KIAA0171 Antibody, Clathrin interactor 1 Antibody, ENTH Antibody, Epsin 4 Antibody
Host	CLINT1 antibody was produced in Mouse
Clonality:	Monoclonal
Isotype:	IgG1,k
Clone Name:	1E6
Immunogen Species:	CLINT1 antibody was raised against Human
Immunogen:	CLINT1 antibody was raised against eNTH (NP_055481, 161 a.a. ~ 262 a.a) partial recombinant protein with GST tag. MW of the GST tag alone is 26 KDa.
Specificity:	Human HIP1
Reactivity:	Human, Mouse, Rat
Purification:	Protein A purified
Presentation:	PBS, pH 7.2
Recommended Storage:	Store at -20°C or lower. Aliquot to avoid repeated freezing and thawing.
Usage Summary:	Immunohistochemistry: Formalin-fixed paraffin-embedded sections. Sandwich ELISA: Recombinant protein. Western Blot: Cell lysate, Cell lysate, Cell lysate, Cell lysate, Recombinant protein.
Uses:	IHC - Paraffin (3 µg/ml), Western blot, ELISA (Optimal dilution to be determined by the researcher)
Size:	100 µg

Immunohistochemistry Image:



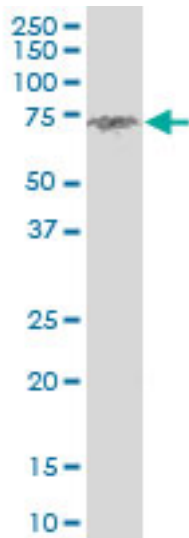
Immunoperoxidase of monoclonal antibody to CLINT1 on formalin-fixed paraffin-embedded human small Intestine. [antibody concentration 3 ug/ml]

Western Blot Image:



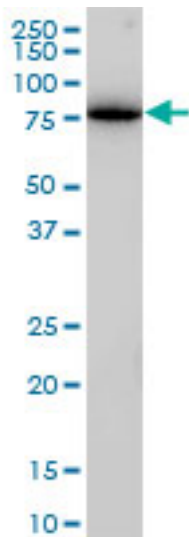
ENTH monoclonal antibody (M03), clone 1E6. Western blot of ENTH expression in PC-12.

Western Blot Image:



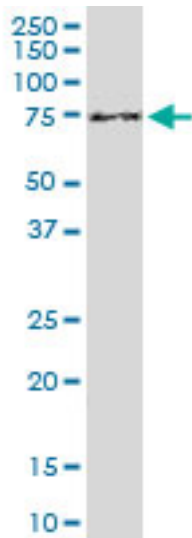
ENTH monoclonal antibody (M03), clone 1E6. Western blot of ENTH expression in Raw 264.7.

Western Blot Image:



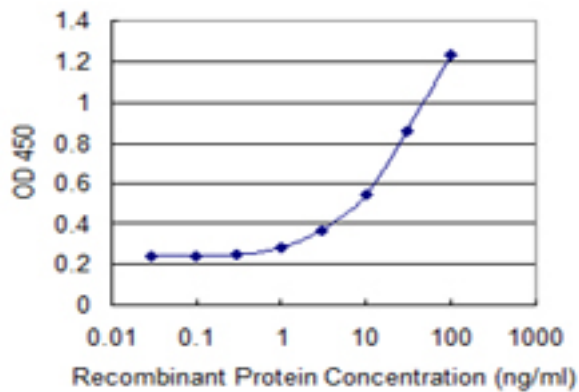
ENTH monoclonal antibody (M03), clone 1E6. Western blot of ENTH expression in Jurkat.

Western Blot Image:



ENTH monoclonal antibody (M03), clone 1E6. Western blot of ENTH expression in NIH/3T3.

ELISA Image:



Detection limit for recombinant GST tagged CLINT1 is 0.3 ng/ml as a capture antibody.

Requested From:

Japan

Laboratory Reagent For In Vitro Research Use Only

Not for resale without prior written consent from LifeSpan BioSciences, Inc.

Created on 9/25/2014

© 2014 LifeSpan BioSciences