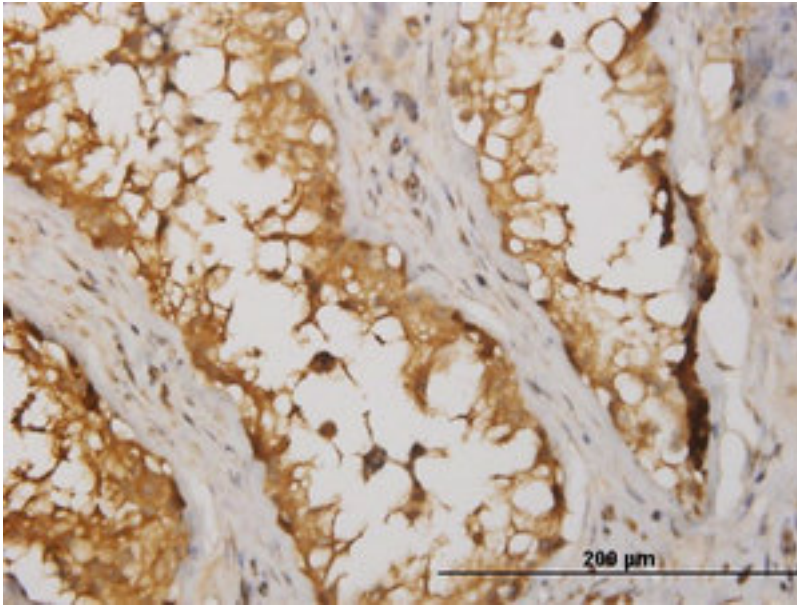


NME2 / NM23 Mouse anti-Human Monoclonal (1D3) Antibody - LS-C133349 - LSBio

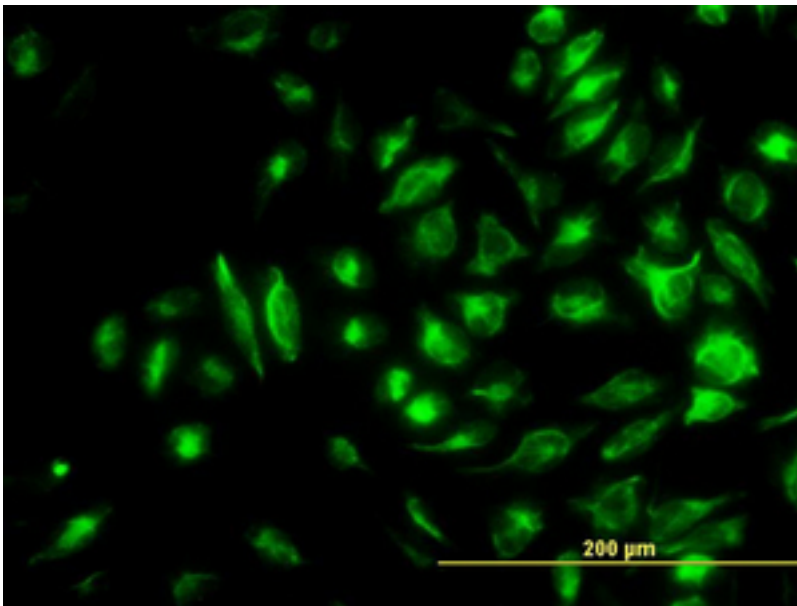
CatalogID:	LS-C133349
Target:	NME/NM23 nucleoside diphosphate kinase 2 (NME2)
Synonyms:	NME2 Antibody, Histidine protein kinase NDKB Antibody, NDKB Antibody, NM23-H2 Antibody, PUF Antibody, NDP kinase B Antibody, NDPK-B Antibody, C-myc transcription factor Antibody, NDK B Antibody, NDPKB Antibody, NM23 Antibody, NM23B Antibody
Host	NME2 antibody was produced in Mouse
Clonality:	Monoclonal
Isotype:	IgG3,k
Clone Name:	1D3
Immunogen Species:	NME2 / NM23 antibody was raised against Human
Immunogen:	NME2 / NM23 antibody was raised against nME2 (NP_002503, 51 a.a. ~ 153 a.a) partial recombinant protein with GST tag. MW of the GST tag alone is 26 KDa.
Specificity:	Human NME2
Reactivity:	Human, Mouse, Rat
Purification:	Protein A purified
Presentation:	PBS, pH 7.2
Recommended Storage:	Store at -20°C or lower. Aliquot to avoid repeated freezing and thawing.
Usage Summary:	Immunohistochemistry: Formalin-fixed paraffin-embedded sections. Sandwich ELISA: Recombinant protein. Western Blot: Cell lysate, Cell lysate, Cell lysate, Cell lysate, Recombinant protein.
Uses:	IHC - Paraffin (1.5 µg/ml), Immunofluorescence (10 µg/ml), Western blot, ELISA (Optimal dilution to be determined by the researcher)
Size:	100 µg

Immunohistochemistry Image:



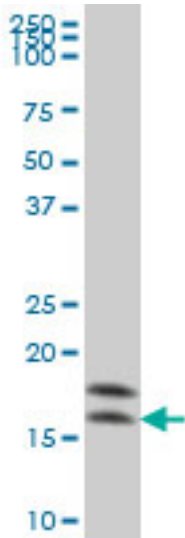
Immunoperoxidase of monoclonal antibody to NME2 on formalin-fixed paraffin-embedded human testis. [antibody concentration 1.5 ug/ml]

Immunofluorescence Image:



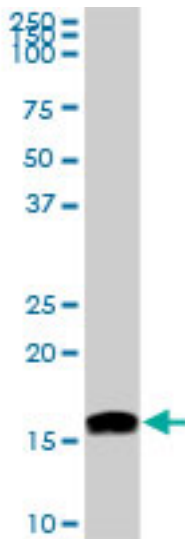
Immunofluorescence of monoclonal antibody to NME2 on HeLa cell. [antibody concentration 10 ug/ml]

Western Blot Image:



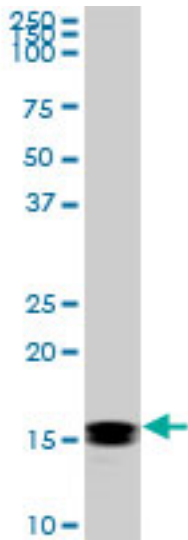
NME2 monoclonal antibody (M06), clone 1D3 Western blot of NME2 expression in HeLa.

Western Blot Image:



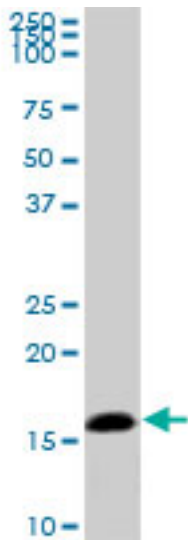
NME2 monoclonal antibody (M06), clone 1D3. Western blot of NME2 expression in NIH/3T3.

Western Blot Image:



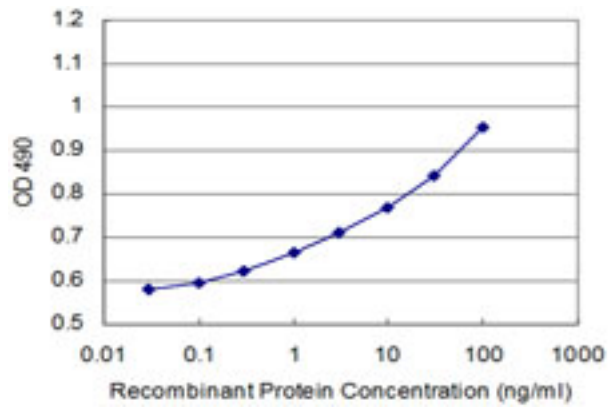
NME2 monoclonal antibody (M06), clone 1D3. Western blot of NME2 expression in Raw 264.7.

Western Blot Image:



NME2 monoclonal antibody (M06), clone 1D3. Western blot of NME2 expression in PC-12.

ELISA Image:



Detection limit for recombinant GST tagged NME2 is 0.3 ng/ml as a capture antibody.

Requested From:

Japan

Laboratory Reagent For In Vitro Research Use Only

Not for resale without prior written consent from LifeSpan BioSciences, Inc.

Created on 9/25/2014

© 2014 LifeSpan BioSciences