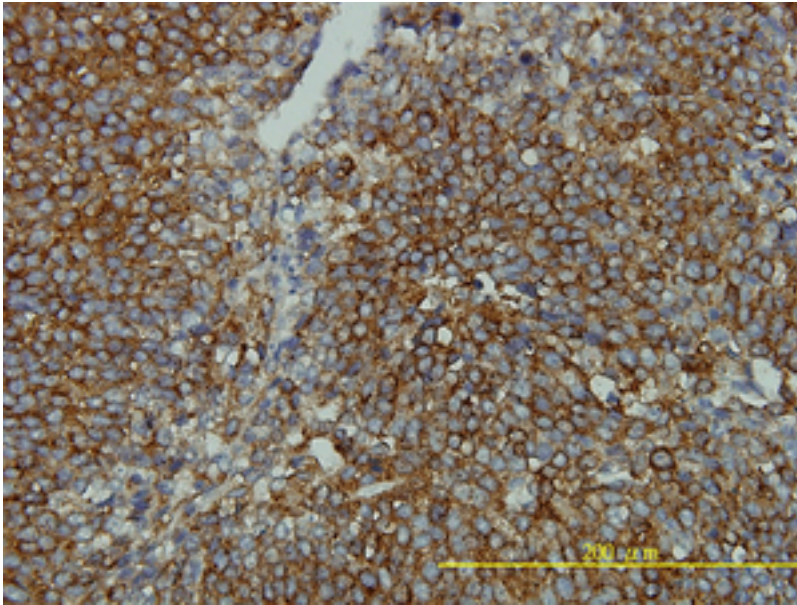


CLTB Mouse anti-Human Monoclonal (4B12-1E3) Antibody - LS-C133126 - LSBio

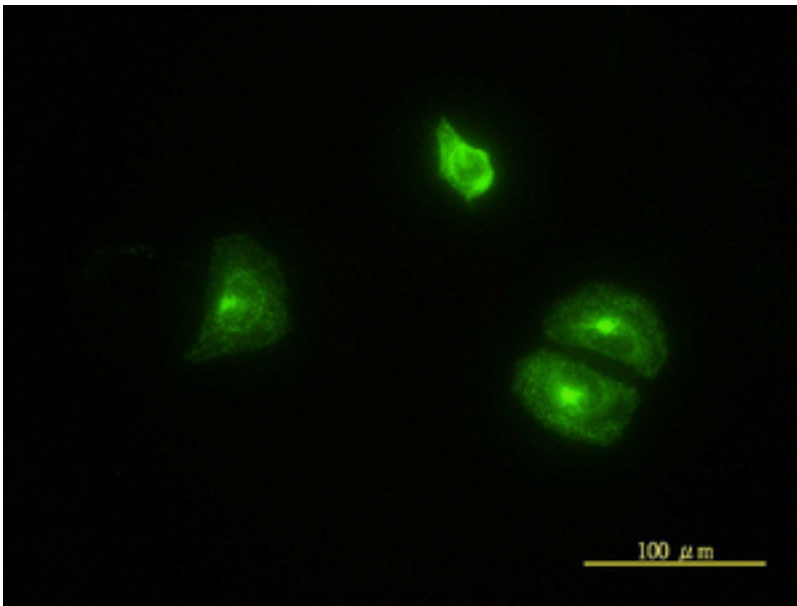
CatalogID:	LS-C133126
Target:	clathrin, light chain B (CLTB)
Synonyms:	CLTB Antibody, Clathrin, light chain B Antibody, Clathrin light chain B Antibody, LCB Antibody, Clathrin, light chain (Lcb) Antibody
Host	CLTB antibody was produced in Mouse
Clonality:	Monoclonal
Isotype:	IgG2b,k
Clone Name:	4B12-1E3
Immunogen Species:	CLTB antibody was raised against Human
Immunogen:	CLTB antibody was raised against cLTB (AAH06457, 1 a.a. ~ 212 a.a) full length recombinant protein with GST tag. MW of the GST tag alone is 26 KDa.
Specificity:	Human CLTB
Reactivity:	Human
Purification:	Protein A purified
Presentation:	PBS, pH 7.2
Recommended Storage:	Store at -20°C or lower. Aliquot to avoid repeated freezing and thawing.
Usage Summary:	Immunohistochemistry: Formalin-fixed paraffin-embedded sections. Western Blot: Cell lysate, Transfected lysate, Recombinant protein.
Uses:	IHC - Paraffin (2 µg/ml), Immunofluorescence (10 µg/ml), Western blot, ELISA (Optimal dilution to be determined by the researcher)
Size:	100 µg

Immunohistochemistry Image:



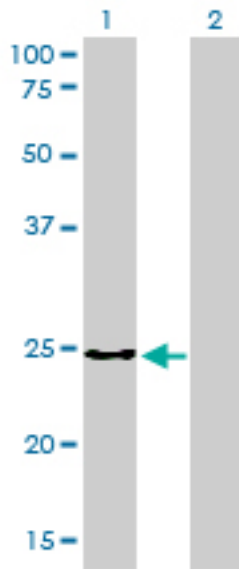
Immunoperoxidase of monoclonal antibody to CLTB on formalin-fixed paraffin-embedded human transitional cell carcinoma tissue. [antibody concentration 2 ug/ml].

Immunofluorescence Image:



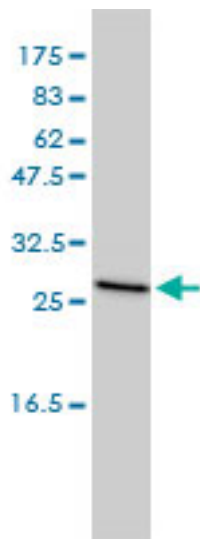
Immunofluorescence of monoclonal antibody to CLTB on HeLa cell. [antibody concentration 10 ug/ml]

Western Blot Image:



Western blot of CLTB expression in transfected 293T cell line by CLTB monoclonal antibody (M01), clone 4B12-1E3.

Western Blot Image:



CLTB monoclonal antibody (M01), clone 4B12-1E3 Western blot of CLTB expression in MCF-7.

Requested From:

Japan

Laboratory Reagent For In Vitro Research Use Only

Not for resale without prior written consent from LifeSpan BioSciences, Inc.

Created on 9/25/2014

© 2014 LifeSpan BioSciences