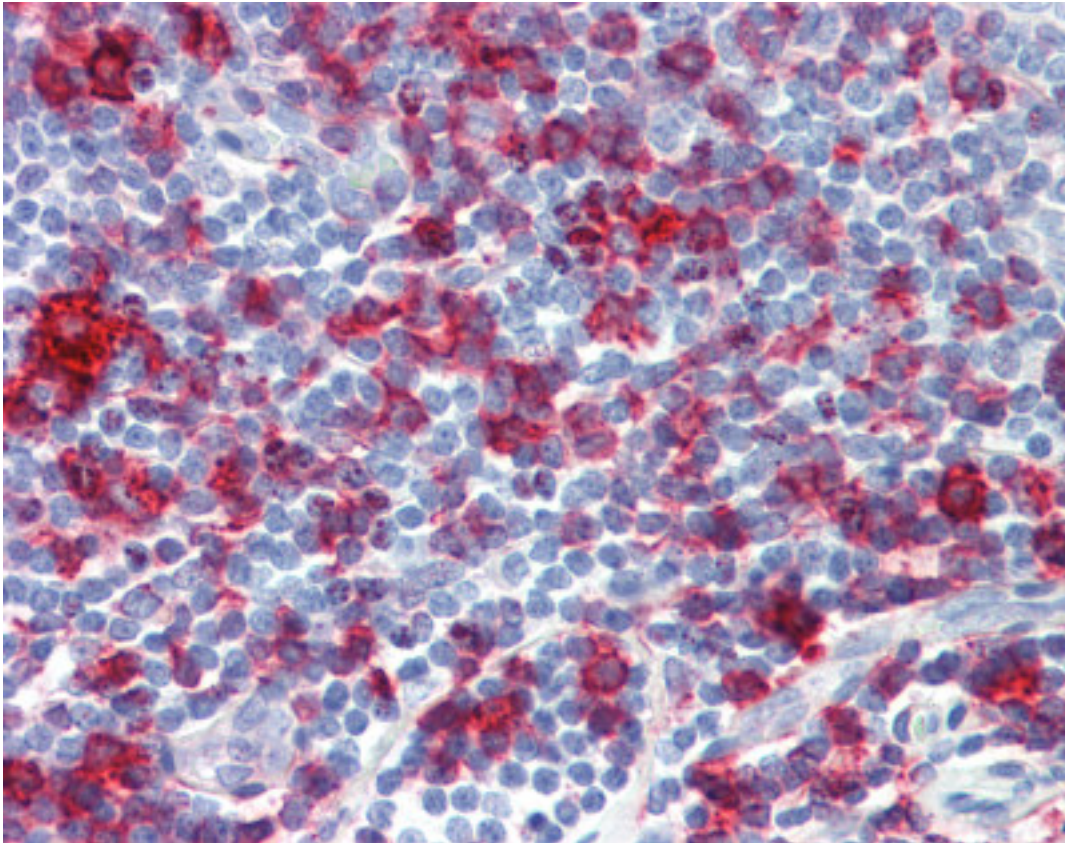


**MHC Class II Mouse anti-Sheep Monoclonal (FITC) Antibody - LS-C130768 - LSBio**

<b>CatalogID:</b>	LS-C130768
<b>Target:</b>	MHC Class II
<b>Host</b>	MHC Class II antibody was produced in Mouse
<b>Clonality:</b>	Monoclonal
<b>Isotype:</b>	IgG2a
<b>Conjugations:</b>	Fluorescein (FITC)
<b>Immunogen Species:</b>	MHC Class II antibody was raised against Sheep
<b>Immunogen:</b>	MHC Class II antibody was raised against sheep MHC Class II DQ DR Polymorphic.
<b>Specificity:</b>	Recognizes sheep MHC Class II DQ DR Polymorphic. Species cross-reactivity: Goat, Human, Bovine.
<b>Reactivity:</b>	Sheep, Human, Bovine, Goat
<b>Purification:</b>	Protein G purified
<b>Presentation:</b>	PBS, pH 7.4, 1% BSA, 0.09% sodium azide
<b>Recommended Storage:</b>	Long term: -20°C; Short term: +4°C. Avoid repeat freeze-thaw cycles.
<b>Usage Summary:</b>	Suitable for use in Flow cytometry: 1:10; 10 ul labels 10 <sup>6</sup> cells in 100ul.
<b>Uses:</b>	IHC - Paraffin (1:50), Flow Cytometry (1:10) (Optimal dilution to be determined by the researcher)
<b>Size:</b>	100 µg
<b>Concentration:</b>	0.1 mg/ml

**Immunohistochemistry Image:**



Human Tonsil: Formalin-Fixed, Paraffin-Embedded (FFPE)

**Requested From:**

Japan

Laboratory Reagent For In Vitro Research Use Only

Not for resale without prior written consent from LifeSpan BioSciences, Inc.

Created on 9/25/2014

© 2014 LifeSpan BioSciences