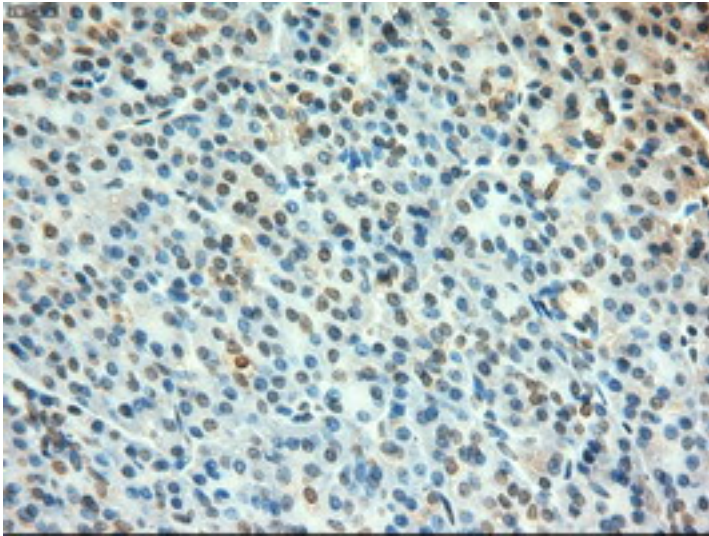


MYC / c-Myc Mouse anti-Human Monoclonal (1A6) Antibody - LS-C114299 - LSBio

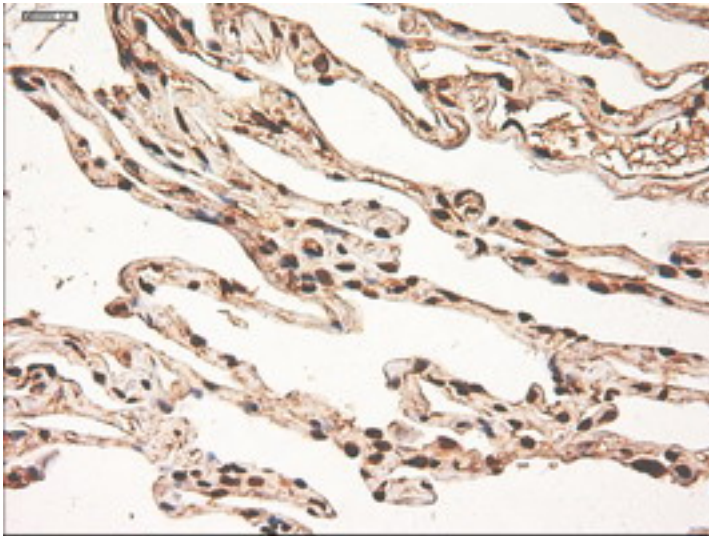
CatalogID:	LS-C114299
Target:	v-myc avian myelocytomatosis viral oncogene homolog
Synonyms:	MYC Antibody, BHLHe39 Antibody, C-Myc Antibody, MRTL Antibody, Myc proto-oncogene protein Antibody, Proto-oncogene c-Myc Antibody, Rats1 Antibody, Transcription factor p64 Antibody, v-myc Antibody
Host	MYC antibody was produced in Mouse
Clonality:	Monoclonal
Isotype:	IgG2b
Clone Name:	1A6
Immunogen Species:	MYC / c-Myc antibody was raised against Human
Antigen Type:	Recombinant protein
Immunogen:	MYC / c-Myc antibody was raised against full length human recombinant protein of human Myc (NP_002458) produced in E. coli.
Specificity:	Human c-Myc
Reactivity:	Human
Purification:	Protein A/G purified
Presentation:	PBS, pH 7.3, 1% BSA, 50% glycerol, 0.02% sodium azide
Recommended Storage:	Store at -20°C. Minimize freezing and thawing.
Usage Summary:	Concentration: 0.5-1.0 mg/ml (Lot dependent)
Uses:	IHC - Paraffin (1:50), Immunofluorescence (1:100), Western blot (1:2000), Flow Cytometry (1:100) (Optimal dilution to be determined by the researcher)
Size:	100 µl

Immunohistochemistry Image:



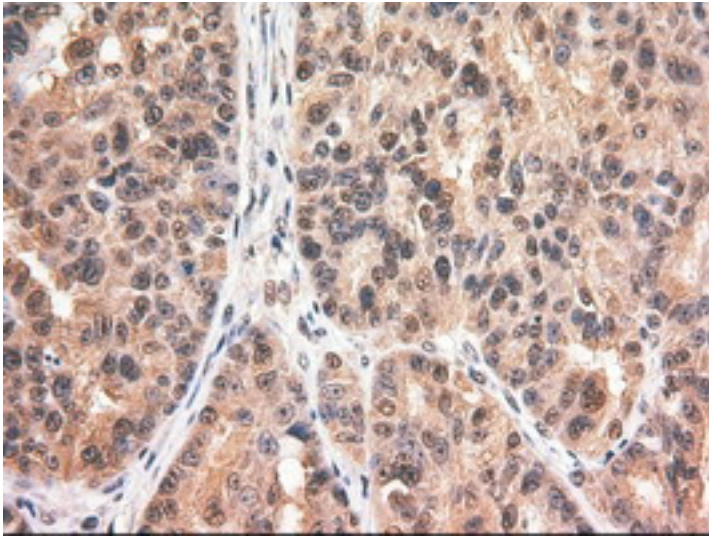
IHC of paraffin-embedded Human pancreas tissue using anti-MYC mouse monoclonal antibody.

Immunohistochemistry Image:



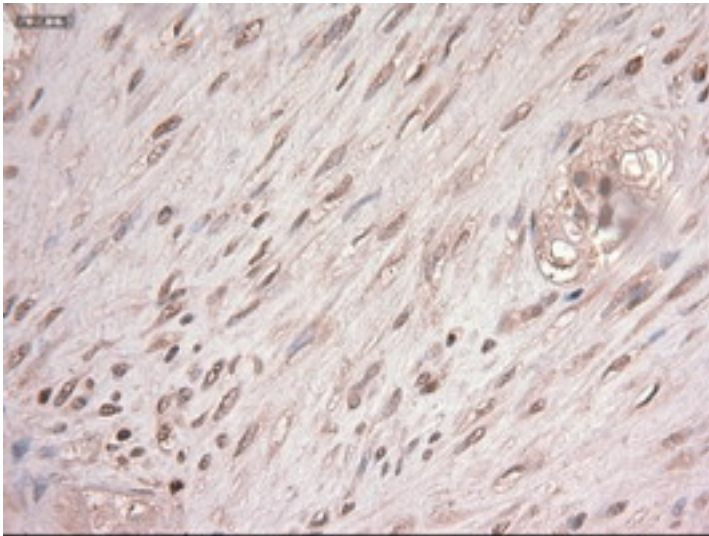
IHC of paraffin-embedded Human lung tissue using anti-MYC mouse monoclonal antibody.

Immunohistochemistry Image:



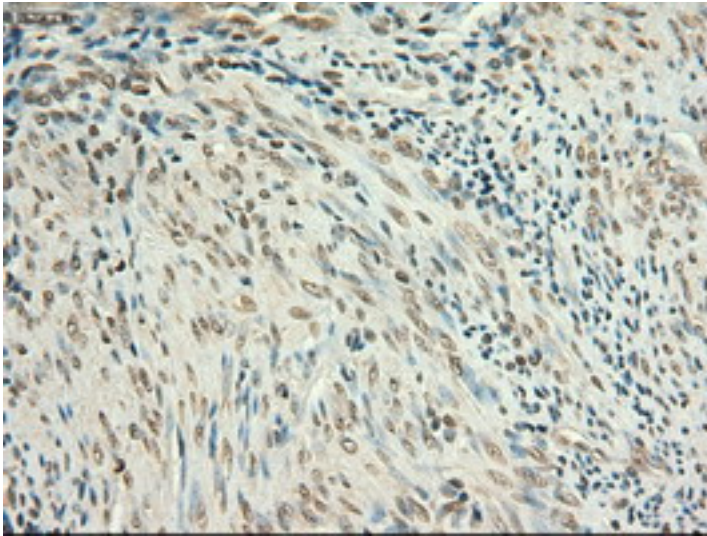
IHC of paraffin-embedded Adenocarcinoma of Human ovary tissue using anti-MYC mouse monoclonal antibody.

Immunohistochemistry Image:



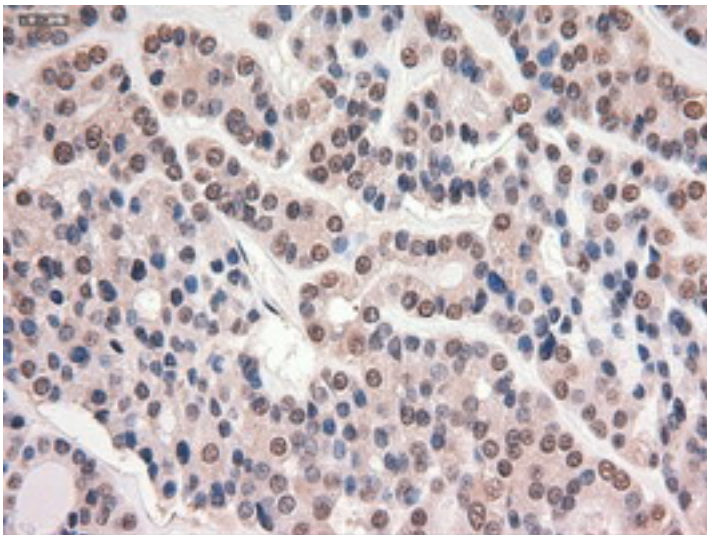
IHC of paraffin-embedded Carcinoma of Human pancreas tissue using anti-MYC mouse monoclonal antibody.

Immunohistochemistry Image:



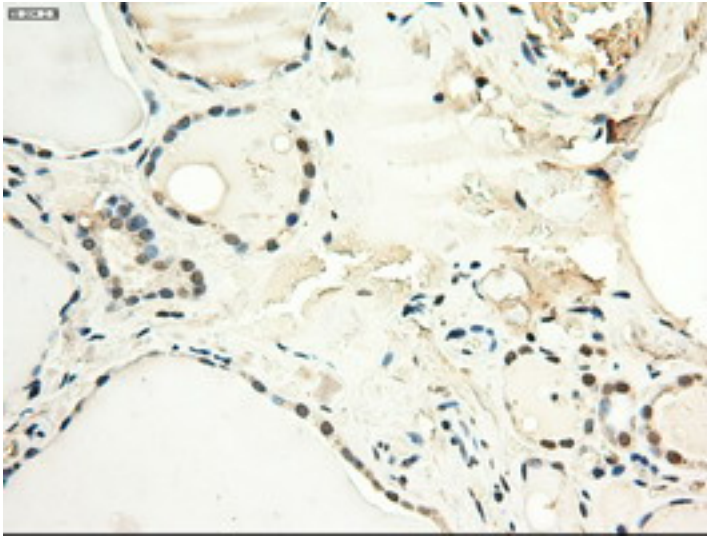
IHC of paraffin-embedded Human endometrium tissue using anti-MYC mouse monoclonal antibody.

Immunohistochemistry Image:



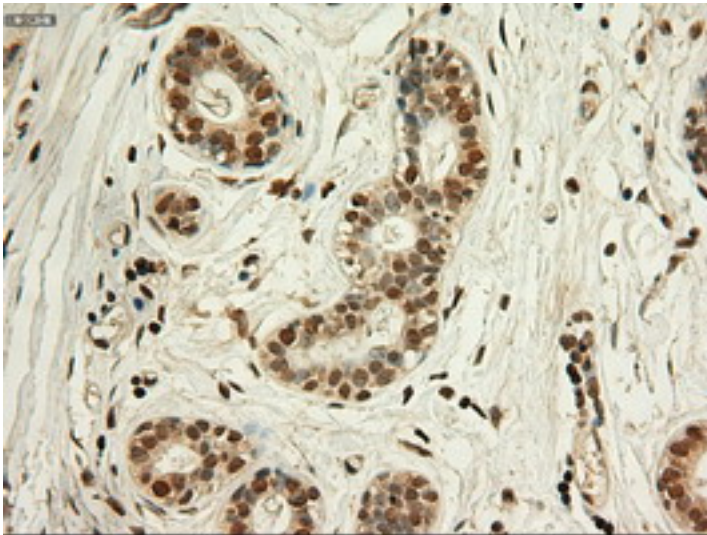
IHC of paraffin-embedded Carcinoma of Human thyroid tissue using anti-MYC mouse monoclonal antibody.

Immunohistochemistry Image:



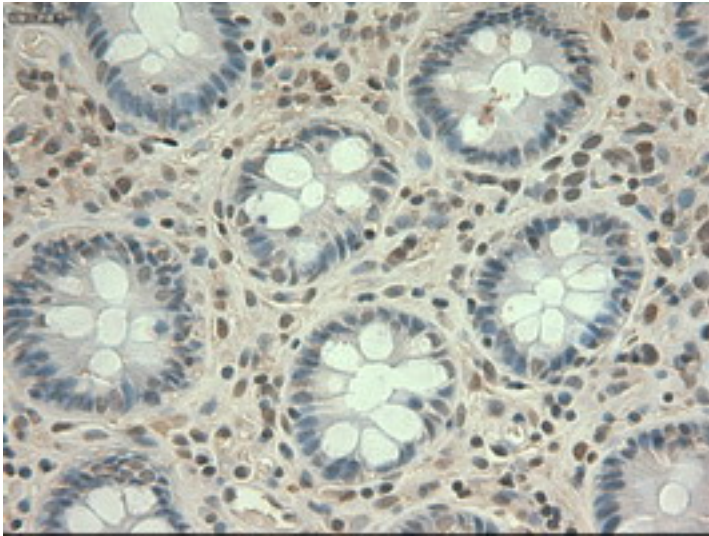
IHC of paraffin-embedded Human thyroid tissue using anti-MYC mouse monoclonal antibody.

Immunohistochemistry Image:



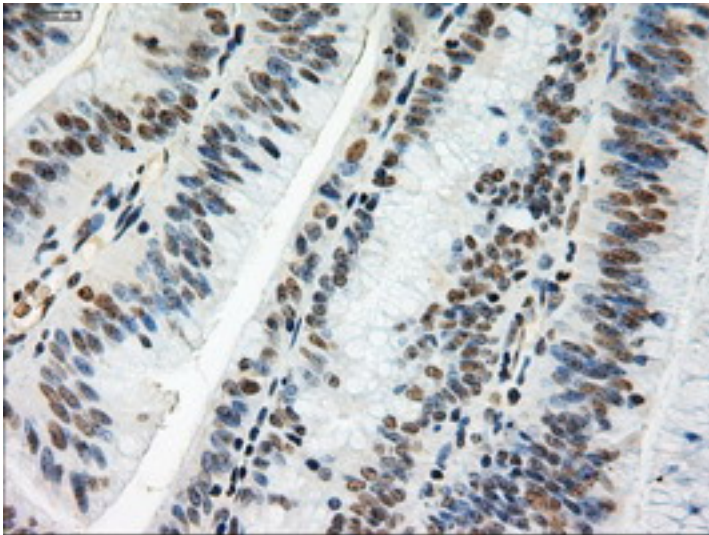
IHC of paraffin-embedded Human breast tissue using anti-MYC mouse monoclonal antibody.

Immunohistochemistry Image:



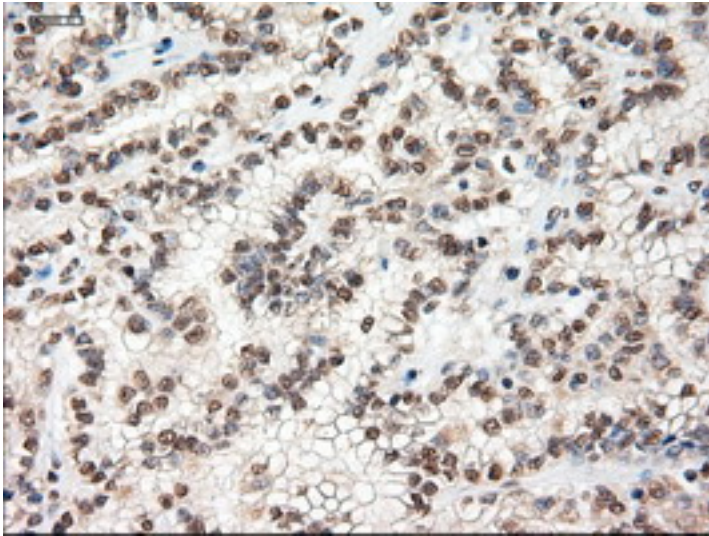
IHC of paraffin-embedded Human colon tissue using anti-MYC mouse monoclonal antibody.

Immunohistochemistry Image:



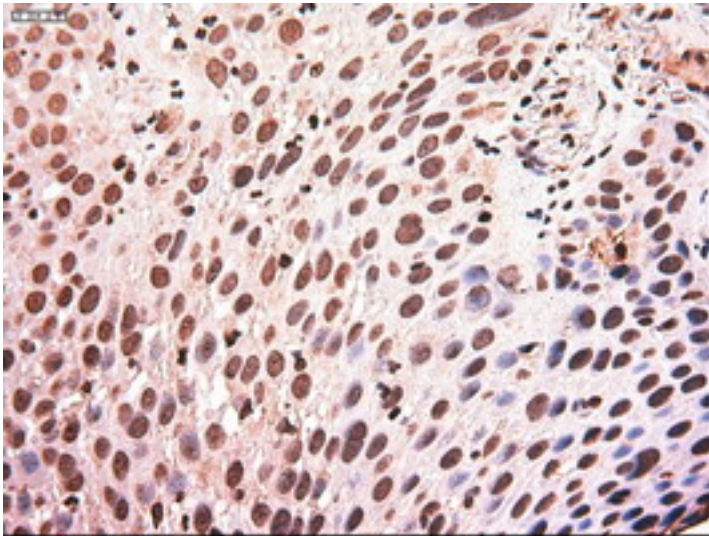
IHC of paraffin-embedded Adenocarcinoma of Human colon tissue using anti-MYC mouse monoclonal antibody.

Immunohistochemistry Image:



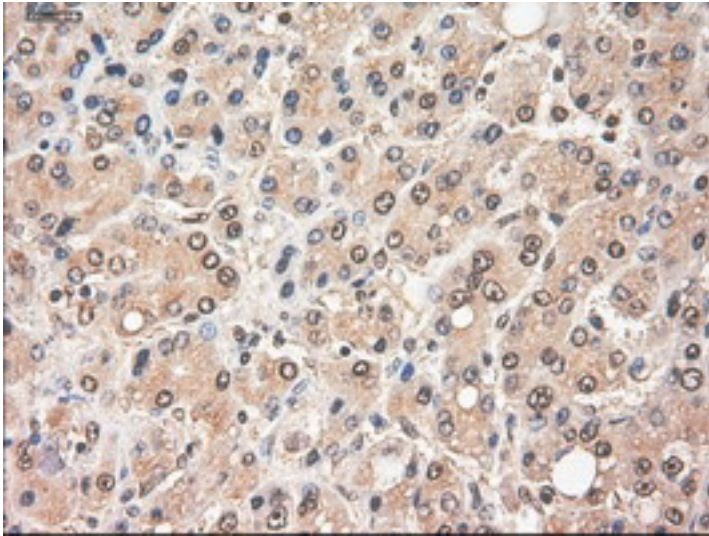
IHC of paraffin-embedded Carcinoma of Human kidney tissue using anti-MYC mouse monoclonal antibody.

Immunohistochemistry Image:



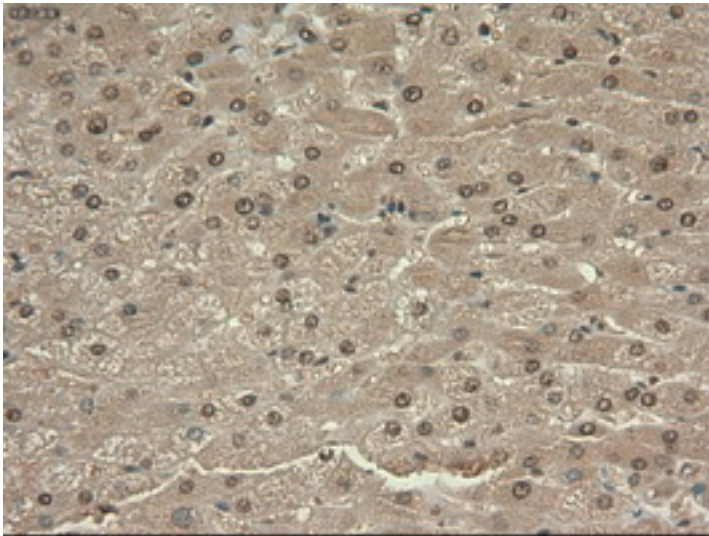
IHC of paraffin-embedded Carcinoma of Human lung tissue using anti-MYC mouse monoclonal antibody.

Immunohistochemistry Image:



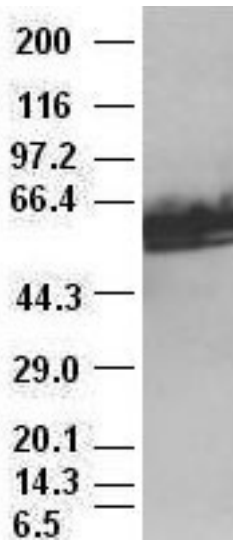
IHC of paraffin-embedded Carcinoma of Human liver tissue using anti-MYC mouse monoclonal antibody.

Immunohistochemistry Image:



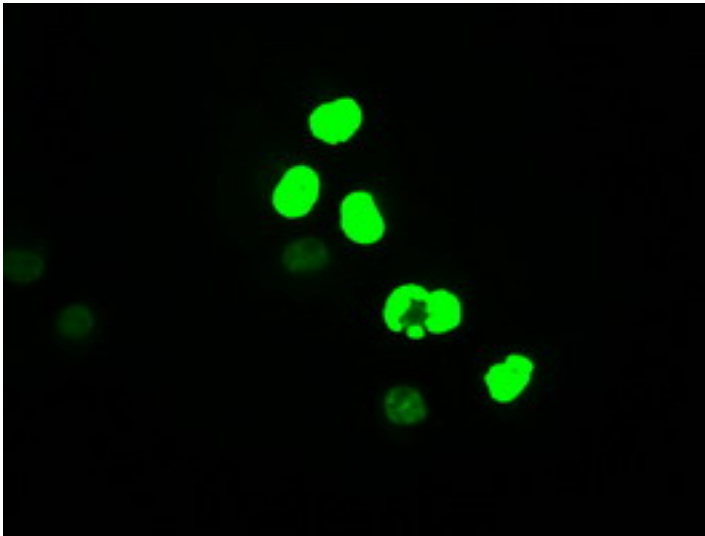
IHC of paraffin-embedded Human liver tissue using anti-MYC mouse monoclonal antibody.

Immunofluorescence Image:



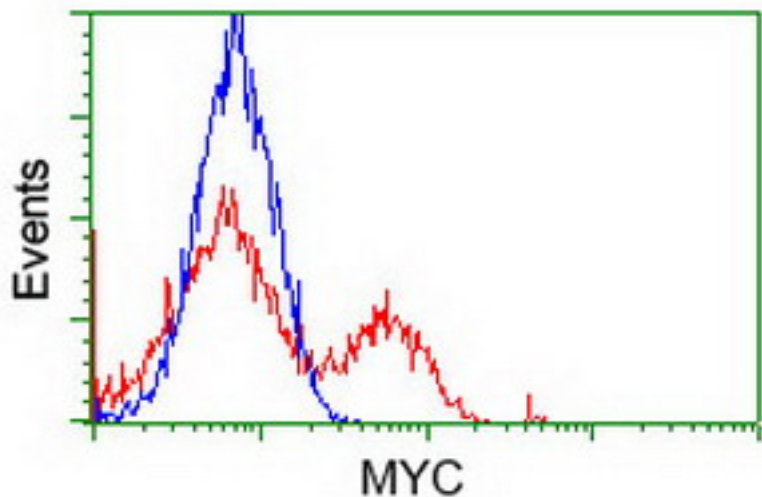
Anti-MYC mouse monoclonal antibody immunofluorescent staining of COS7 cells transiently transfected by pCMV6-ENTRY MYC.

Immunofluorescence Image:



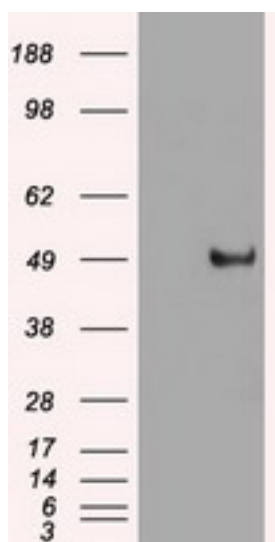
Anti-MYC mouse monoclonal antibody immunofluorescent staining of COS7 cells transiently transfected by pCMV6-ENTRY MYC.

Flow Cytometry Image:



HEK293T cells transfected with either overexpress plasmid (Red) or empty vector control plasmid (Blue) were immunostained by anti-MYC antibody, and then analyzed by flow cytometry.

Western Blot Image:



c-myc antibody (1A6) at 1:2000 with HeLa lysates.

Requested From:

Japan

Laboratory Reagent For In Vitro Research Use Only

Not for resale without prior written consent from LifeSpan BioSciences, Inc.

Created on 9/24/2014

© 2014 LifeSpan BioSciences