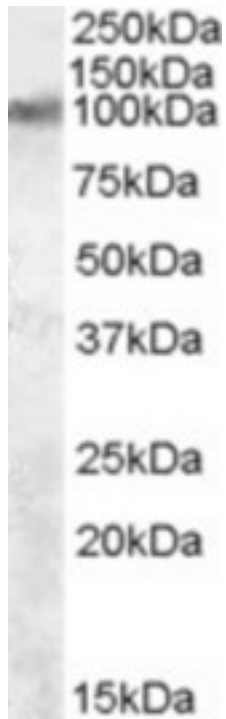


VRL1 / TRPV2 Goat anti-Mouse Polyclonal (C-Terminus) Antibody - LS-C112764 - LSBio	
<b>CatalogID:</b>	LS-C112764
<b>Target:</b>	transient receptor potential cation channel, subfamily V, member 2 (TRPV2)
<b>Synonyms:</b>	TRPV2 Antibody, GRC Antibody, OTRPC2 Antibody, Osm-9-like TRP channel 2 Antibody, VRL-1 Antibody, VRL1 Antibody, VRL Antibody
<b>Family / Subfamily:</b>	Ion Channel / Calcium channel - TRP
<b>Host</b>	TRPV2 antibody was produced in Goat
<b>Clonality:</b>	Polyclonal
<b>Immunogen Species:</b>	VRL1 / TRPV2 antibody was raised against Mouse
<b>Antigen Type:</b>	Synthetic peptide
<b>Immunogen:</b>	VRL1 / TRPV2 antibody was raised against synthetic peptide C-SEEDHLPQLVLSH from the C-terminus of mouse TRPV2 (NP_035836.2). Percent identity with other species by BLAST analysis: Mouse (100%), Rat (93%), Hamster (93%), Rabbit (86%).
<b>Specificity:</b>	Mouse TRPV2.
<b>Epitope:</b>	C-Terminus
<b>Reactivity:</b>	Mouse, Rat
<b>Predicted Reactivity:</b>	Hamster
<b>Purification:</b>	Immunoaffinity purified
<b>Presentation:</b>	Tris-buffered saline, pH 7.3, 0.5% BSA, 0.02% sodium azide
<b>Recommended Storage:</b>	Store at -20°C. Minimize freezing and thawing.
<b>Usage Summary:</b>	Peptide ELISA: antibody detection limit dilution 1:8000. Western blot: Approx 100kDa band observed in Rat Brain lysates (calculated MW of 86.0kDa according to Mouse NP_035836.2 and of 86.7kDa according to Rat NP_058903.2). Recommended concentration: 1-3 ug/ml.
<b>Uses:</b>	Western blot (1 - 3 µg/ml), ELISA (1:8000) (Optimal dilution to be determined by the researcher)
<b>Size:</b>	100 µg

**Western Blot Image:**



TRPV2 antibody (2 ug/ml) staining of Rat Brain lysate (35 ug protein/ml in RIPA buffer).  
Primary incubation was 1 hour. Detected by chemiluminescence.

**Requested From:**

Japan

Laboratory Reagent For In Vitro Research Use Only

Not for resale without prior written consent from LifeSpan BioSciences, Inc.

Created on 9/24/2014

© 2014 LifeSpan BioSciences