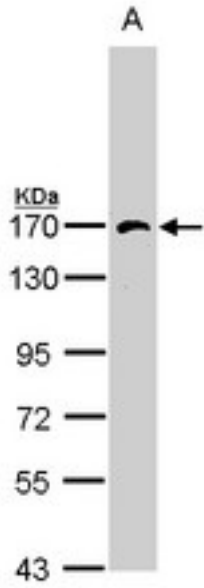


AP3B1 Rabbit anti-Human Polyclonal Antibody - LS-C109531 - LSBio

<b>CatalogID:</b>	LS-C109531
<b>Target:</b>	adaptor-related protein complex 3, beta 1 subunit (AP3B1)
<b>Synonyms:</b>	AP3B1 Antibody, ADTB3A Antibody, AP-3 complex beta-3A subunit Antibody, Ap-3 complex beta3a subunit Antibody, Beta-3A-adaptin Antibody, Beta3A-adaptin Antibody, ADTB3 Antibody, HPS2 Antibody, HPS Antibody, PE Antibody, AP-3 complex subunit beta-1 Antibody
<b>Host</b>	AP3B1 antibody was produced in Rabbit
<b>Clonality:</b>	Polyclonal
<b>Immunogen Species:</b>	AP3B1 antibody was raised against Human
<b>Immunogen:</b>	AP3B1 antibody was raised against recombinant protein fragment containing a sequence corresponding to a region within amino acids 33 and 251 of Human HPS2.
<b>Specificity:</b>	Human HPS2. Predicted cross-reactivity based on amino acid sequence homology: mouse (89%), bovine (99%), dogs (100%), pig (99%).
<b>Reactivity:</b>	Human
<b>Purification:</b>	Immunoaffinity purified
<b>Presentation:</b>	0.1 M Tris-glycine, pH 7, 20% Glycerol, 0.01% Thimerosal
<b>Recommended Storage:</b>	Aliquot and store at -20°C. Minimize freezing and thawing.
<b>Uses:</b>	Western blot (Optimal dilution to be determined by the researcher)
<b>Size:</b>	100 µl

**Western Blot Image:**



Sample (30 ug of whole cell lysate). A: Hep G2. 7.5% SDS PAGE. AP3B1 antibody diluted at 1:1000.

**Requested From:**

Japan

Laboratory Reagent For In Vitro Research Use Only

Not for resale without prior written consent from LifeSpan BioSciences, Inc.

Created on 9/24/2014

© 2014 LifeSpan BioSciences