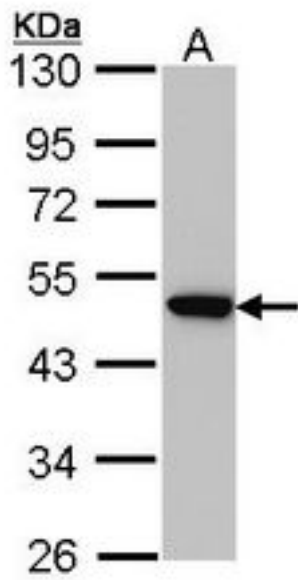


AP50 / AP2M1 Rabbit anti-Human Polyclonal Antibody - LS-C109514 - LSBio	
CatalogID:	LS-C109514
Target:	adaptor-related protein complex 2, mu 1 subunit (AP2M1)
Synonyms:	AP2M1 Antibody, Adaptin-mu2 Antibody, AP-2 complex subunit mu Antibody, AP-2 mu 2 chain Antibody, AP-2 mu chain Antibody, AP50 Antibody, CLAPM1 Antibody, Mu2 Antibody, KIAA0109 Antibody, HA2 50 kDa subunit Antibody
Host	AP2M1 antibody was produced in Rabbit
Clonality:	Polyclonal
Immunogen Species:	AP50 / AP2M1 antibody was raised against Human
Immunogen:	AP50 / AP2M1 antibody was raised against recombinant protein fragment containing a sequence corresponding to a region within amino acids 60 and 278 of Human AP-2M1.
Specificity:	Human AP2M1. Predicted cross-reactivity based on amino acid sequence homology: mouse (100%), zebrafish (95%).
Reactivity:	Human
Purification:	Immunoaffinity purified
Presentation:	0.1 M Tris-glycine, pH 7, 10% Glycerol, 0.01% Thimerosal
Recommended Storage:	Aliquot and store at -20°C. Minimize freezing and thawing.
Uses:	Western blot (1:500 - 1:3000) (Optimal dilution to be determined by the researcher)
Size:	100 µl
Concentration:	1 mg/ml

Western Blot Image:



Sample (30 ug of whole cell lysate). A: Hep G2. 10% SDS PAGE. AP2M1 antibody diluted at 1:1000.

Requested From:

Japan

Laboratory Reagent For In Vitro Research Use Only

Not for resale without prior written consent from LifeSpan BioSciences, Inc.

Created on 9/24/2014

© 2014 LifeSpan BioSciences