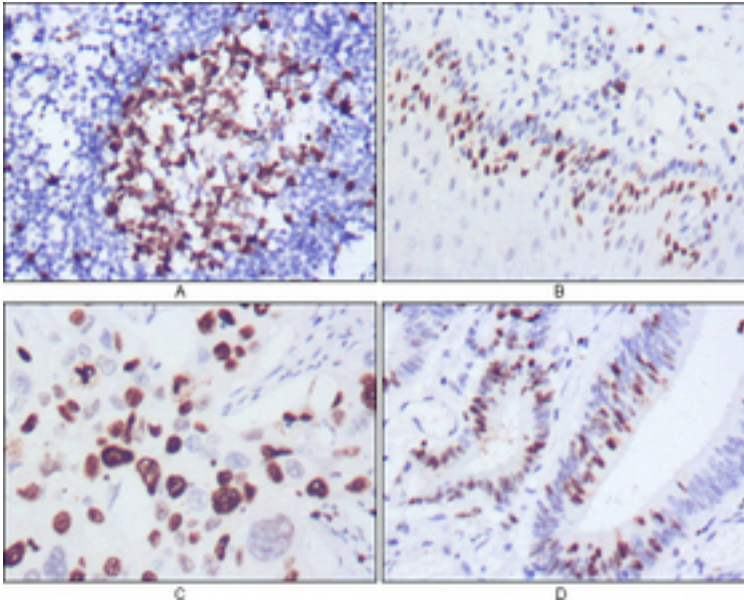


MKI67 / Ki67 Mouse anti-Human Monoclonal (4A1) Antibody - LS-C108830 - LSBio

CatalogID:	LS-C108830
Target:	marker of proliferation Ki-67 (MKI67)
Synonyms:	MKI67 Antibody, Antigen KI-67 Antibody, Ki67 Antibody, KIA Antibody
Host	MKI67 antibody was produced in Mouse
Clonality:	Monoclonal
Isotype:	IgG2b
Clone Name:	4A1
Immunogen Species:	MKI67 / Ki67 antibody was raised against Human
Antigen Type:	Synthetic peptide - KLH conjugated
Immunogen:	MKI67 / Ki67 antibody was raised against synthetic peptide corresponding to aa (CEDLAGFKELFQTPG) of human KI67, conjugated to KLH.
Specificity:	Human MKI67
Reactivity:	Human
Purification:	Ascites
Presentation:	Ascites fluid, 0.03% sodium azide
Recommended Storage:	Long term: -20°C; Short term: +4°C. Avoid repeat freeze-thaw cycles.
Uses:	IHC (1:200 - 1:1000), Western blot, ELISA (1:10000) (Optimal dilution to be determined by the researcher)
Uses Not Recommended:	IHC - Paraffin
Size:	100 µl

Western Blot Image:



IHC of paraffin-embedded human lymph node (A), esophagus (B), lung cancer (C), rectum cancer (D), showing nuclear localization using anti-Ki67 antibody with DAB staining.

Requested From:

Japan

Laboratory Reagent For In Vitro Research Use Only

Not for resale without prior written consent from LifeSpan BioSciences, Inc.

Created on 9/24/2014

© 2014 LifeSpan BioSciences