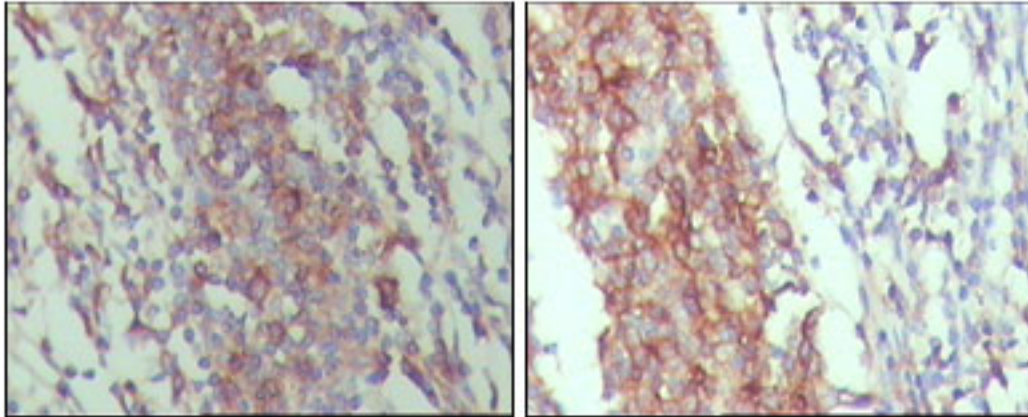


**CD45 Mouse anti-Human Monoclonal (4A8A4C7A2) Antibody - LS-C108780 - LSBio**

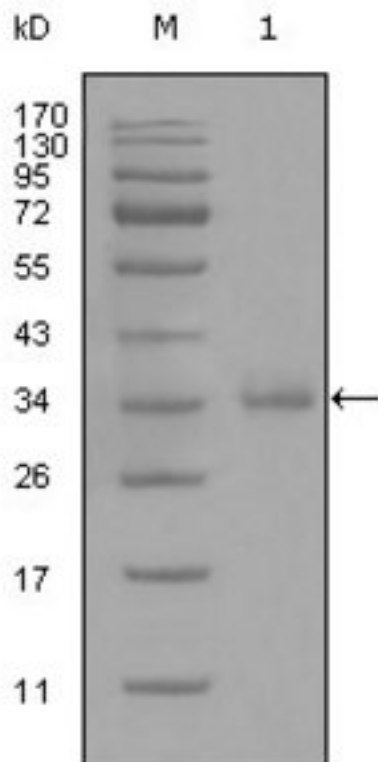
<b>CatalogID:</b>	LS-C108780
<b>Target:</b>	protein tyrosine phosphatase, receptor type, C (PTPRC)
<b>Synonyms:</b>	PTPRC Antibody, B220 Antibody, CD45R Antibody, CD45 Antibody, gp180 Antibody, Leukocyte common antigen Antibody, L-CA Antibody, Leucocyte common antigen Antibody, LY5 Antibody, T200 Antibody, T200 glycoprotein Antibody, T200 leukocyte common antigen Antibody, CD45 antigen Antibody, LCA Antibody
<b>Family / Subfamily:</b>	Protein Phosphatase / R1/R6
<b>Host</b>	PTPRC antibody was produced in Mouse
<b>Clonality:</b>	Monoclonal
<b>Isotype:</b>	IgG1
<b>Clone Name:</b>	4A8A4C7A2
<b>Immunogen Species:</b>	CD45 antibody was raised against Human
<b>Immunogen:</b>	CD45 antibody was raised against purified recombinant fragment of CD45 expressed in <i>E. coli</i> .
<b>Specificity:</b>	Human PTPRC
<b>Reactivity:</b>	Human
<b>Purification:</b>	Ascites
<b>Presentation:</b>	Ascites fluid, 0.03% sodium azide
<b>Recommended Storage:</b>	Long term: -20°C; Short term: +4°C. Avoid repeat freeze-thaw cycles.
<b>Uses:</b>	IHC (1:200 - 1:1000), Western blot (1:500 - 1:2000), ELISA (1:10000) (Optimal dilution to be determined by the researcher)
<b>Size:</b>	100 µl

**Western Blot Image:**



IHC of paraffin-embedded human lymph node tissue, showing membrane and cytoplasmic localization with DAB staining using anti-CD45 Antibody.

**Western Blot Image:**



Western blot of anti-CD45 monoclonal antibody against truncated CD45 recombinant protein(1).

**Requested From:**

Japan

Laboratory Reagent For In Vitro Research Use Only

Not for resale without prior written consent from LifeSpan BioSciences, Inc.

Created on 9/24/2014

© 2014 LifeSpan BioSciences