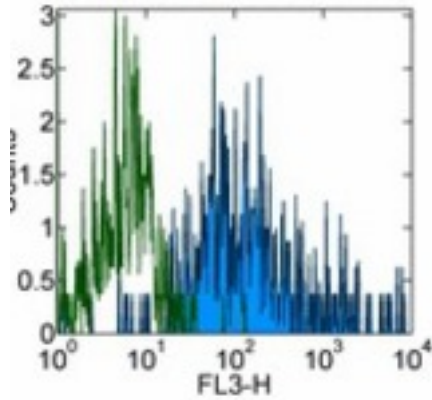


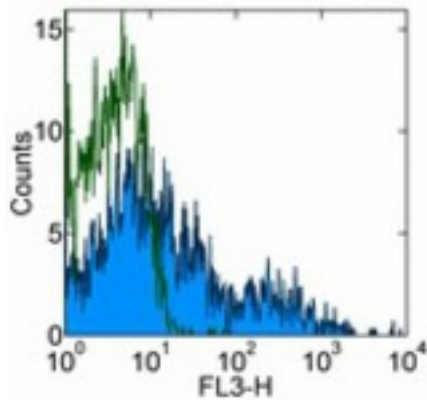
HLA-DR Mouse anti-Human Monoclonal (PE, Cy7) (LN3) Antibody - LS-C107202 - LSBio	
<b>CatalogID:</b>	LS-C107202
<b>Target:</b>	MHC Class II HLA-DR
<b>Host</b>	MHC Class II HLA-DR antibody was produced in Mouse
<b>Clonality:</b>	Monoclonal
<b>Isotype:</b>	IgG2b,k
<b>Clone Name:</b>	LN3
<b>Conjugations:</b>	Phycoerythrin (PE), Cy7
<b>Immunogen Species:</b>	HLA-DR antibody was raised against Human
<b>Immunogen:</b>	HLA-DR antibody was raised against human MHC Class II HLA DR
<b>Reactivity:</b>	Human
<b>Purification:</b>	Affinity purified
<b>Presentation:</b>	PBS, pH 7.2, 150 mM sodium chloride, 0.09% sodium azide, 0.2% BSA, 0.1% gelatin
<b>Recommended Storage:</b>	Store at +4°C. Do not freeze. Product is photosensitive and should be protected from light.
<b>Usage Summary:</b>	This LN3 antibody has been pre-titrated and tested by flow cytometric analysis of human peripheral blood leukocytes. This can be used at 5 ul (0.015 ug)/per test. A test is defined as the amount (ug)/test of antibody that will stain a cell sample in a final volume of 100 ul. Cell number should be determined empirically but can range from 10 <sup>5</sup> to 10 <sup>8</sup> cells/test.
<b>Uses:</b>	Flow Cytometry (Optimal dilution to be determined by the researcher)
<b>Size:</b>	25 tst or 100 tst

**Flow Cytometry Image:**



Staining of normal human peripheral blood cells with staining buffer (autofluorescence) (open histogram) or PE-Cy7 anti-human HLA-DR (LN3) (colored histogram). Cells in the monocyte gate were used for analysis.

**Flow Cytometry Image:**



Staining of normal human peripheral blood cells with staining buffer (autofluorescence) (open histogram) or PE-Cy7 anti-human HLA-DR (LN3) (colored histogram). Cells in the lymphocyte gate were used for analysis.

**Requested From:**

Japan

Laboratory Reagent For In Vitro Research Use Only

Not for resale without prior written consent from LifeSpan BioSciences, Inc.

Created on 9/24/2014

© 2014 LifeSpan BioSciences