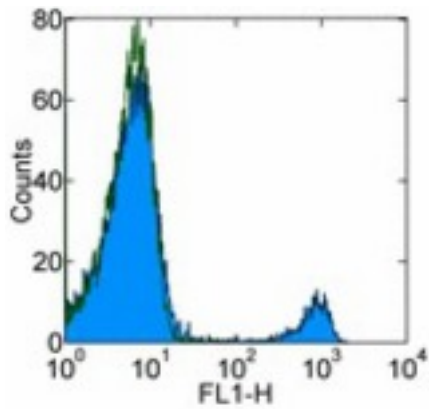


CD16 Mouse anti-Human Monoclonal (FITC) (CB16) Antibody - LS-C106961 - LSBio

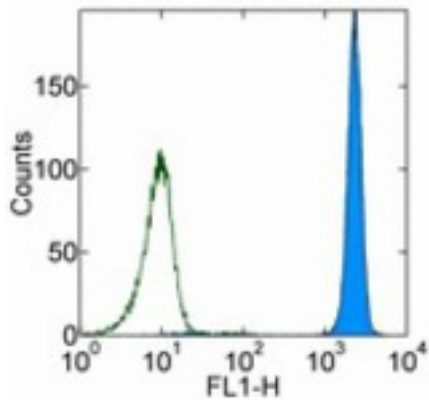
CatalogID:	LS-C106961
Target:	CD16
Host	CD16 antibody was produced in Mouse
Clonality:	Monoclonal
Isotype:	IgG1
Clone Name:	CB16
Conjugations:	Fluorescein (FITC)
Immunogen Species:	CD16 antibody was raised against Human
Immunogen:	CD16 antibody was raised against human CD16
Reactivity:	Human
Purification:	Affinity purified
Presentation:	PBS, pH 7.2, <=0.09% sodium azide, BSA and/or gelatin
Recommended Storage:	Store at +4°C. Do not freeze. Product is photosensitive and should be protected from light.
Usage Summary:	This CB16 (CB16) antibody has been pre-titrated and tested by flow cytometric analysis of normal human peripheral blood cells. This can be used at 20 ul (0.125 ug)/per test. A test is defined as the amount (ug)/test of antibody that will stain a cell sample in a final volume of 100 ul. Cell number should be determined empirically but can range from 10 ⁵ to 10 ⁸ cells/test.
Uses:	Flow Cytometry (Optimal dilution to be determined by the researcher)
Size:	25 tst or 100 tst

Flow Cytometry Image:



Staining of normal human peripheral blood cells with 0.125 ug of FITC Mouse IgG1, K isotype control (open histogram) or FITC anti-human CD16 (CB16) (colored histogram). Cells in the lymphocyte gates were used for analysis.

Flow Cytometry Image:



Staining of granulocyte gates were used for analysis.

Requested From:

Japan

Laboratory Reagent For In Vitro Research Use Only

Not for resale without prior written consent from LifeSpan BioSciences, Inc.

Created on 9/24/2014

© 2014 LifeSpan BioSciences