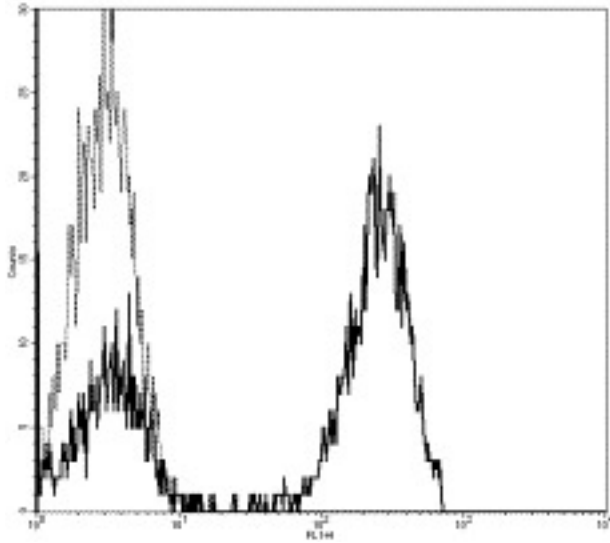


CD3 Mouse anti-Human Monoclonal (FITC) (HIT3a) Antibody - LS-C106855 - LSBio

CatalogID:	LS-C106855
Target:	CD3
Host	CD3 antibody was produced in Mouse
Clonality:	Monoclonal
Isotype:	IgG2a,k
Clone Name:	HIT3a
Conjugations:	Fluorescein (FITC)
Immunogen Species:	CD3 antibody was raised against Human
Immunogen:	CD3 antibody was raised against human CD3
Reactivity:	Human
Purification:	Affinity purified
Presentation:	PBS, pH 7.2, 150 mM sodium chloride, 0.09% sodium azide, 0.2% BSA
Recommended Storage:	Store at +4°C. Do not freeze. Product is photosensitive and should be protected from light.
Usage Summary:	This HIT3a antibody has been pre-titrated and tested by flow cytometric analysis of human peripheral blood leukocytes. This can be used at 5 ul (1 ug)/per test. A test is defined as the amount (ug)/test of antibody that will stain a cell sample in a final volume of 100 ul. Cell number should be determined empirically but can range from 10 ⁵ to 10 ⁸ cells/test.
Uses:	Flow Cytometry (Optimal dilution to be determined by the researcher)
Size:	25 tst or 100 tst

Flow Cytometry Image:



Profile of FITC conjugated mAb HIT3a (CD3) staining human peripheral blood lymphocytes.

Requested From:

Japan

Laboratory Reagent For In Vitro Research Use Only

Not for resale without prior written consent from LifeSpan BioSciences, Inc.

Created on 9/24/2014

© 2014 LifeSpan BioSciences