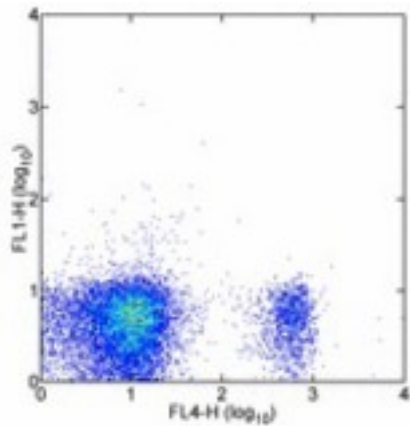


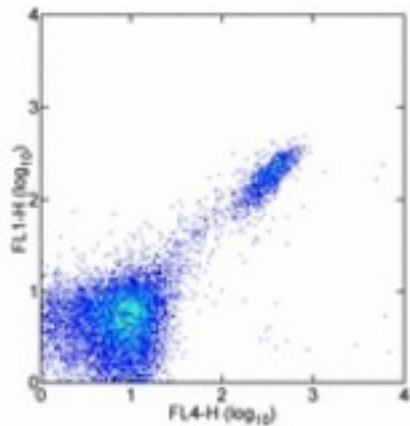
CD8B / CD8 Beta Rat anti-Mouse Monoclonal (FITC) (H35-17.2) Antibody - LS-C106752 - LSBio	
<b>CatalogID:</b>	LS-C106752
<b>Target:</b>	CD8b molecule
<b>Synonyms:</b>	CD8B Antibody, CD8b antigen Antibody, CD8b molecule Antibody, CD8B1 Antibody, p37 Antibody, LY3 Antibody, LYT3 Antibody, Leu2 Antibody
<b>Host</b>	CD8B antibody was produced in Rat
<b>Clonality:</b>	Monoclonal
<b>Isotype:</b>	IgG2b,k
<b>Clone Name:</b>	H35-17.2
<b>Conjugations:</b>	Fluorescein (FITC)
<b>Immunogen Species:</b>	CD8B / CD8 Beta antibody was raised against Mouse
<b>Immunogen:</b>	CD8B / CD8 Beta antibody was raised against mouse CD8b
<b>Reactivity:</b>	Mouse
<b>Purification:</b>	Affinity purified
<b>Presentation:</b>	PBS, pH 7.2, <=0.09% sodium azide
<b>Recommended Storage:</b>	Store at +4°C. Do not freeze. Product is photosensitive and should be protected from light.
<b>Usage Summary:</b>	This H35-17.2 (H35-17.2) antibody has been tested by flow cytometric analysis of mouse splenocytes. This can be used at less than or equal to 0.25 ug per test. A test is defined as the amount (ug) of antibody that will stain a cell sample in a final volume of 100 ul. Cell number should be determined empirically but can range from 10 <sup>5</sup> to 10 <sup>8</sup> cells/test. It is recommended that the antibody be carefully titrated for optimal performance in the assay of interest.
<b>Uses:</b>	Flow Cytometry (Optimal dilution to be determined by the researcher)
<b>Size:</b>	50 µg or 100 µg or 500 µg

**Flow Cytometry Image:**



Staining of BALB/c splenocytes with APC anti-mouse CD8a (53-6.7) (LS-C107303) and 0.125 ug of FITC Rat IgG2b Isotype Control. Cells in the lymphocyte gate were used for analysis.

**Flow Cytometry Image:**



Staining of BALB/c splenocytes with APC anti-mouse CD8a (53-6.7) (LS-C107303) and FITC anti-mouse CD8b (H35-17.2). Cells in the lymphocyte gate were used for analysis.

**Requested From:**

Japan

Laboratory Reagent For In Vitro Research Use Only

Not for resale without prior written consent from LifeSpan BioSciences, Inc.

Created on 9/24/2014

© 2014 LifeSpan BioSciences