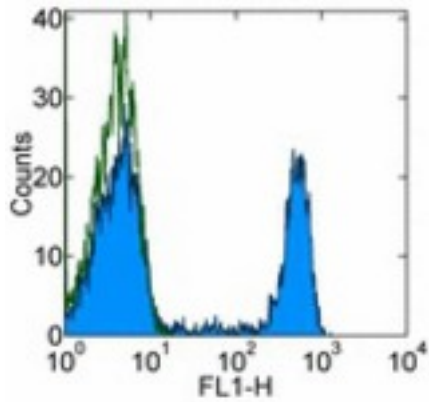


CD8A / CD8 Alpha Mouse anti-Human Monoclonal (FITC) (RPA-T8) Antibody - LS-C106725 - LSBio

CatalogID:	LS-C106725
Target:	CD8a molecule
Synonyms:	CD8A Antibody, CD8a molecule Antibody, CD8a antigen Antibody, OKT8 T-cell antigen Antibody, Leu2 T-lymphocyte antigen Antibody, T8 T-cell antigen Antibody, T cell co-receptor Antibody, p32 Antibody, CD8 Antibody, Leu2 Antibody, T-cell antigen Leu2 Antibody
Host	CD8A antibody was produced in Mouse
Clonality:	Monoclonal
Isotype:	IgG1,k
Clone Name:	RPA-T8
Conjugations:	Fluorescein (FITC)
Immunogen Species:	CD8A / CD8 Alpha antibody was raised against Human
Immunogen:	CD8A / CD8 Alpha antibody was raised against human CD8A
Reactivity:	Human
Purification:	Affinity purified
Presentation:	PBS, pH 7.2, 150 mM sodium chloride, 0.09% sodium azide, 0.2% BSA
Recommended Storage:	Store at +4°C. Do not freeze. Product is photosensitive and should be protected from light.
Usage Summary:	This RPA-T8 antibody has been pre-titrated and tested by flow cytometric analysis of human peripheral blood leukocytes. This can be used at 20 ul (1 ug)/per test. A test is defined as the amount (ug)/test of antibody that will stain a cell sample in a final volume of 100 ul. Cell number should be determined empirically but can range from 10 ⁵ to 10 ⁸ cells/test.
Uses:	Flow Cytometry (Optimal dilution to be determined by the researcher)
Size:	25 tst or 100 tst

Flow Cytometry Image:



Staining of normal human peripheral blood cells with 1.0 ug FITC Mouse IgG1, K isotype control (open histogram) or 20 ul FITC anti-human CD8a (RPA-T8) (colored histogram). Cells in the lymphocyte gate were used for analysis.

Requested From:

Japan

Laboratory Reagent For In Vitro Research Use Only

Not for resale without prior written consent from LifeSpan BioSciences, Inc.

Created on 9/24/2014

© 2014 LifeSpan BioSciences