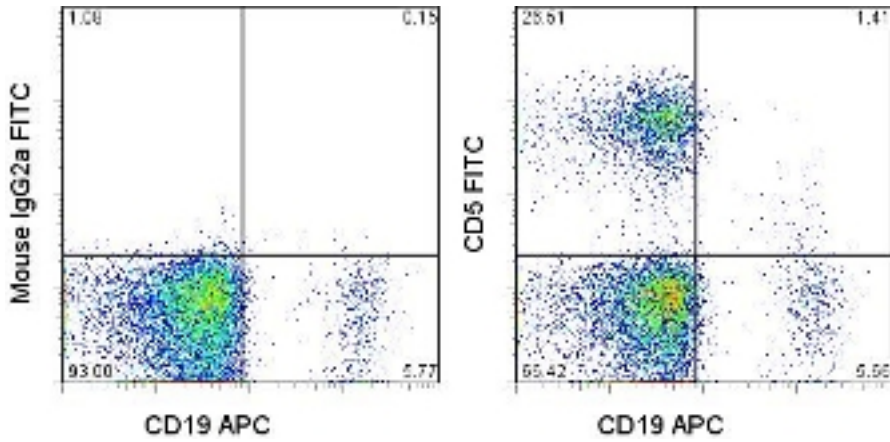


CD5 Mouse anti-Human Monoclonal (FITC) (L17F12) Antibody - LS-C106711 - LSBio

| | |
|-----------------------------|---|
| CatalogID: | LS-C106711 |
| Target: | CD5 molecule |
| Synonyms: | CD5 Antibody, CD5 antigen Antibody, CD5 antigen (p56-62) Antibody, CD5 molecule Antibody, Lymphocyte antigen T1/Leu-1 Antibody, LEU1 Antibody, T1 Antibody |
| Host | CD5 antibody was produced in Mouse |
| Clonality: | Monoclonal |
| Isotype: | IgG2a |
| Clone Name: | L17F12 |
| Conjugations: | Fluorescein (FITC) |
| Immunogen Species: | CD5 antibody was raised against Human |
| Immunogen: | CD5 antibody was raised against human CD5 |
| Reactivity: | Human |
| Purification: | Affinity purified |
| Presentation: | Aqueous buffer, 0.09% sodium azide, contains stabilizer if necessary |
| Recommended Storage: | Store at +4°C. Do not freeze. Product is photosensitive and should be protected from light. |
| Usage Summary: | This L17F12 antibody has been pre-titrated and tested by flow cytometric analysis of human peripheral blood leukocytes. This can be used at 5 ul (0.125 ug)/per test. A test is defined as the amount (ug)/test of antibody that will stain a cell sample in a final volume of 100 ul. Cell number should be determined empirically but can range from 10 ⁵ to 10 ⁸ cells/test. |
| Uses: | Flow Cytometry (Optimal dilution to be determined by the researcher) |
| Size: | 25 tst or 100 tst |

Flow Cytometry Image:



Staining of normal human peripheral blood cells with APC anti-human CD19 (HIB19) and FITC Mouse IgG2a, K isotype control (left) or FITC anti-human CD5 (L17F12) (right). Cells in the lymphocyte gate were used for analysis.

Requested From:

Japan

Laboratory Reagent For In Vitro Research Use Only

Not for resale without prior written consent from LifeSpan BioSciences, Inc.

Created on 9/24/2014

© 2014 LifeSpan BioSciences