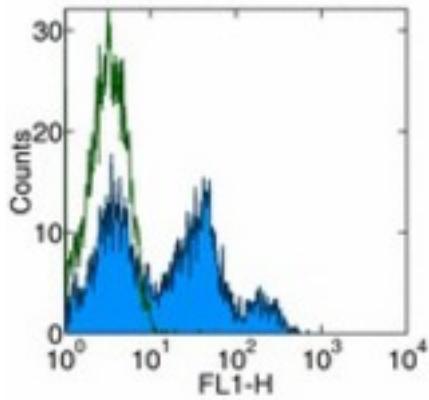


DPP4 / CD26 Mouse anti-Human Monoclonal (FITC) (2A6) Antibody - LS-C106330 - LSBio	
CatalogID:	LS-C106330
Target:	dipeptidyl-peptidase 4 (DPP4)
Synonyms:	DPP4 Antibody, ADCP-2 Antibody, ADABP Antibody, Dipeptidyl peptidase IV Antibody, Dipeptidyl-peptidase 4 Antibody, DPPIV Antibody, ADCP2 Antibody, T-cell activation antigen CD26 Antibody, CD26 Antibody, CD26 antigen Antibody, Dipeptidyl peptidase 4 Antibody, Dipeptidylpeptidase 4 Antibody, DPP IV Antibody, TP103 Antibody
Family / Subfamily:	Protease / Serine S9B
Host	DPP4 antibody was produced in Mouse
Clonality:	Monoclonal
Isotype:	IgG1,k
Clone Name:	2A6
Conjugations:	Fluorescein (FITC)
Immunogen Species:	DPP4 / CD26 antibody was raised against Human
Immunogen:	DPP4 / CD26 antibody was raised against human DPP4
Reactivity:	Human
Purification:	Affinity purified
Presentation:	PBS, pH 7.2, 150 mM sodium chloride, 0.09% sodium azide, 0.2% BSA
Recommended Storage:	Store at +4°C. Do not freeze. Product is photosensitive and should be protected from light.
Usage Summary:	This 2A6 antibody has been pre-titrated and tested by flow cytometric analysis of human peripheral blood leukocytes. This can be used at 5 µL (1 ug) per test. A test is defined as the amount (ug) of antibody that will stain a cell sample in a final volume of 100 µL. Cell number should be determined empirically but can range from 10 ⁵ to 10 ⁸ cells/test.
Uses:	Flow Cytometry (Optimal dilution to be determined by the researcher)
Size:	25 tst or 100 tst

Flow Cytometry Image:



Surface staining of normal human peripheral blood cells with anti-human CD26 (2A6) FITC. Appropriate isotype controls were used (open histogram). Cells in the lymphocyte population were used for analysis.

Requested From:

Japan

Laboratory Reagent For In Vitro Research Use Only

Not for resale without prior written consent from LifeSpan BioSciences, Inc.

Created on 9/24/2014

© 2014 LifeSpan BioSciences