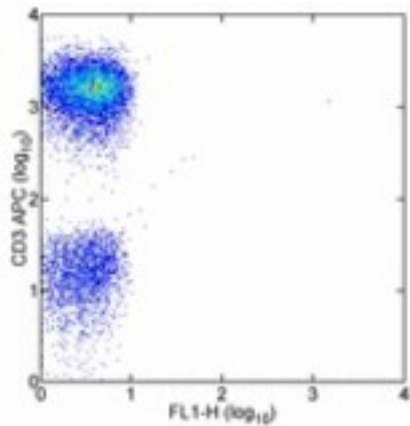


**CD43 Mouse anti-Human Monoclonal (FITC) (84-3C1) Antibody - LS-C106304 - LSBio**

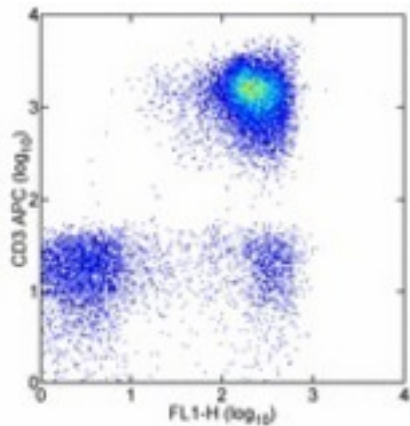
<b>CatalogID:</b>	LS-C106304
<b>Target:</b>	sialophorin (SPN)
<b>Synonyms:</b>	SPN Antibody, GPL115 Antibody, Leukosialin Antibody, Leukocyte sialoglycoprotein Antibody, Galactoglycoprotein Antibody, GALGP Antibody, Sialophorin Antibody, LSN Antibody, CD43 Antibody, CD43 antigen Antibody
<b>Host</b>	SPN antibody was produced in Mouse
<b>Clonality:</b>	Monoclonal
<b>Isotype:</b>	IgG1
<b>Clone Name:</b>	84-3C1
<b>Conjugations:</b>	Fluorescein (FITC)
<b>Immunogen Species:</b>	CD43 antibody was raised against Human
<b>Immunogen:</b>	CD43 antibody was raised against human SPN
<b>Reactivity:</b>	Human
<b>Purification:</b>	Affinity purified
<b>Presentation:</b>	PBS, pH 7.2, <=0.09% sodium azide
<b>Recommended Storage:</b>	Store at +4°C. Do not freeze. Product is photosensitive and should be protected from light.
<b>Usage Summary:</b>	This 84-3C1 (84-3C1) antibody has been pre-titrated and tested by flow cytometric analysis of peripheral blood mononuclear cells. This can be used at 20 ul (0.25 ug)/per test. A test is defined as the amount (ug)/test of antibody that will stain a cell sample in a final volume of 100 ul. Cell number should be determined empirically but can range from 10 <sup>5</sup> to 10 <sup>8</sup> cells/test.
<b>Uses:</b>	Flow Cytometry (Optimal dilution to be determined by the researcher)
<b>Size:</b>	25 tst or 100 tst

**Flow Cytometry Image:**



Staining of with APC anti-human CD3 (UCHT1) (LS-C107411) and 0.1 ug of FITC Mouse IgG1, K isotype control. Cells in the lymphocyte gate were used for analysis.

**Flow Cytometry Image:**



Staining of with APC anti-human CD3 (UCHT1) (LS-C107411) and FITC anti-human CD43 (84-3C1). Cells in the lymphocyte gate were used for analysis.

**Requested From:**

Japan

Laboratory Reagent For In Vitro Research Use Only

Not for resale without prior written consent from LifeSpan BioSciences, Inc.

Created on 9/24/2014

© 2014 LifeSpan BioSciences