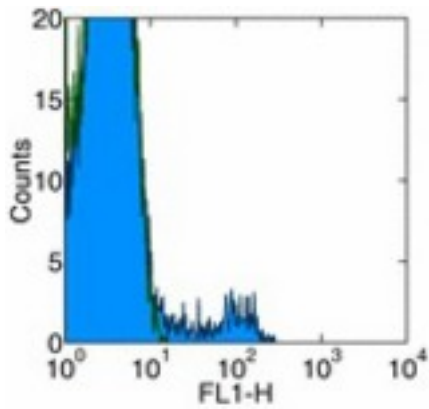


ITGA2 / CD49b Hamster anti-Mouse Monoclonal (FITC) (HMa2) Antibody - LS-C106303 - LSBio	
<b>CatalogID:</b>	LS-C106303
<b>Target:</b>	integrin, alpha 2 (CD49B, alpha 2 subunit of VLA-2 receptor) (ITGA2)
<b>Synonyms:</b>	ITGA2 Antibody, Alpha2 integrin Antibody, BR Antibody, CD49b antigen Antibody, CD49B Antibody, Integrin alpha2 Antibody, Integrin Alpha 2 Antibody, Integrin alpha-2 Antibody, HPA-5 Antibody, VLA-2 Antibody, VLAA2 Antibody, VLA-2 subunit alpha Antibody, Collagen receptor Antibody, GPIa Antibody, Platelet antigen Br Antibody, Platelet glycoprotein GPIa Antibody, VLA2 receptor, alpha-2 subunit Antibody
<b>Family / Subfamily:</b>	Integrin / not assigned-Integrin
<b>Host</b>	ITGA2 antibody was produced in Hamster
<b>Clonality:</b>	Monoclonal
<b>Isotype:</b>	IgG
<b>Clone Name:</b>	HMa2
<b>Conjugations:</b>	Fluorescein (FITC)
<b>Immunogen Species:</b>	ITGA2 / CD49b antibody was raised against Mouse
<b>Immunogen:</b>	ITGA2 / CD49b antibody was raised against mouse ITGA2
<b>Reactivity:</b>	Mouse
<b>Purification:</b>	Affinity purified
<b>Presentation:</b>	PBS, pH 7.2, 150 mM sodium chloride, 0.09% sodium azide
<b>Recommended Storage:</b>	Store at +4°C. Do not freeze. Product is photosensitive and should be protected from light.
<b>Usage Summary:</b>	The HMa2 antibody has been tested by flow cytometric analysis of mouse splenocyte suspensions. This can be used at less than or equal to 0.125 ug per test. A test is defined as the amount (ug) of antibody that will stain a cell sample in a final volume of 100 ul. Cell number should be determined empirically but can range from 10 <sup>5</sup> to 10 <sup>8</sup> cells/test. It is recommended that the antibody be carefully titrated for optimal performance in the assay of interest.
<b>Uses:</b>	Flow Cytometry (Optimal dilution to be determined by the researcher)
<b>Size:</b>	50 µg or 100 µg or 500 µg

**Flow Cytometry Image:**



Surface staining of mouse splenocytes with 0.06 ug FITC anti-mouse CD49b (HMa2). Appropriate isotype controls were used (open histogram). Total viable cells were used for analysis.

**Requested From:**

Japan

Laboratory Reagent For In Vitro Research Use Only

Not for resale without prior written consent from LifeSpan BioSciences, Inc.

Created on 9/24/2014

© 2014 LifeSpan BioSciences