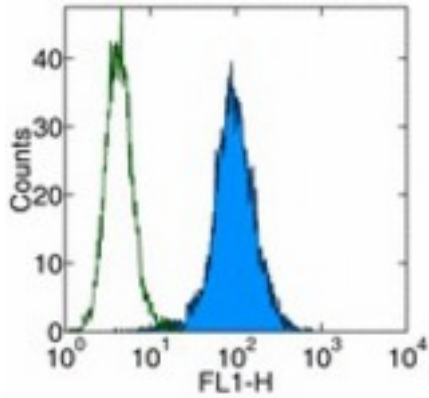


**CD1A Mouse anti-Human Monoclonal (FITC) (HI149) Antibody - LS-C106297 - LSBio**

<b>CatalogID:</b>	LS-C106297
<b>Target:</b>	CD1a molecule
<b>Synonyms:</b>	CD1A Antibody, CD1 Antibody, CD1A antigen, a polypeptide Antibody, CD1a molecule Antibody, FCB6 Antibody, HTA1 Antibody, HTa1 thymocyte antigen Antibody, R4 Antibody, T6 Antibody, CD1a antigen Antibody, Cluster of differentiation 1 A Antibody
<b>Host</b>	CD1A antibody was produced in Mouse
<b>Clonality:</b>	Monoclonal
<b>Isotype:</b>	IgG1,k
<b>Clone Name:</b>	HI149
<b>Conjugations:</b>	Fluorescein (FITC)
<b>Immunogen Species:</b>	CD1A antibody was raised against Human
<b>Antigen Type:</b>	Purified protein
<b>Immunogen:</b>	CD1A antibody was raised against human CD1a
<b>Reactivity:</b>	Human
<b>Purification:</b>	Affinity purified
<b>Presentation:</b>	PBS, pH 7.2, <=0.09% sodium azide, BSA and/or gelatin
<b>Recommended Storage:</b>	Store at +4°C. Do not freeze. Product is photosensitive and should be protected from light.
<b>Usage Summary:</b>	This HI149 antibody has been pre-titrated and tested by flow cytometric analysis of MOLT-4 cells. This can be used at 5 ul (0.5 ug)/per test. A test is defined as the amount (ug)/test of antibody that will stain a cell sample in a final volume of 100 ul. Cell number should be determined empirically but can range from 10 <sup>5</sup> to 10 <sup>8</sup> cells/test.
<b>Uses:</b>	Flow Cytometry (Optimal dilution to be determined by the researcher)
<b>Size:</b>	25 tst or 100 tst

**Flow Cytometry Image:**



Staining of MOLT-4 cells with FITC Mouse IgG1, K isotype control (open histogram) or FITC anti-human CD1a (HI149) (colored histogram). Total viable cells were used for analysis.

**Requested From:**

Japan

Laboratory Reagent For In Vitro Research Use Only

Not for resale without prior written consent from LifeSpan BioSciences, Inc.

Created on 9/24/2014

© 2014 LifeSpan BioSciences