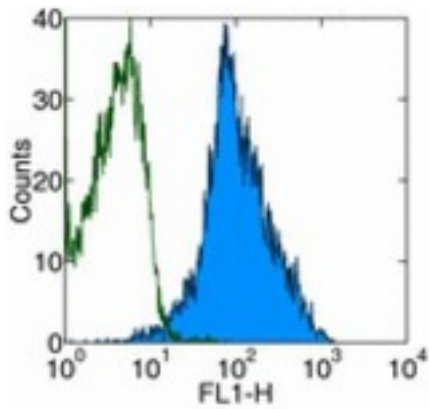


LFA-1 / CD11A Rat anti-Mouse Monoclonal (FITC) (M17/4) Antibody - LS-C106291 - LSBio	
CatalogID:	LS-C106291
Target:	integrin, alpha L (antigen CD11A (p180), lymphocyte function-associated antigen 1; alpha polypeptide) (ITGAL)
Synonyms:	ITGAL Antibody, CD11A Antibody, Integrin alpha-L Antibody, LFA-1 alpha Antibody, LFA-1A Antibody, Integrin gene promoter Antibody, Alpha polypeptide) Antibody, CD11a antigen Antibody, LFA-1 Antibody, LFA1A Antibody
Family / Subfamily:	Integrin / not assigned-Integrin
Host	ITGAL antibody was produced in Rat
Clonality:	Monoclonal
Isotype:	IgG2a,k
Clone Name:	M17/4
Conjugations:	Fluorescein (FITC)
Immunogen Species:	LFA-1 / CD11A antibody was raised against Mouse
Immunogen:	LFA-1 / CD11A antibody was raised against mouse ITGAL
Reactivity:	Mouse
Purification:	Affinity purified
Presentation:	PBS, pH 7.2, 150 mM sodium chloride, 0.09% sodium azide
Recommended Storage:	Store at +4°C. Do not freeze. Product is photosensitive and should be protected from light.
Usage Summary:	The M17/4 antibody has been tested by flow cytometric analysis of mouse splenocyte suspensions. This can be used at less than or equal to 1.0 ug per test. A test is defined as the amount (ug) of antibody that will stain a cell sample in a final volume of 100 ul. Cell number should be determined empirically but can range from 10 ⁵ to 10 ⁸ cells/test. It is recommended that the antibody be carefully titrated for optimal performance in the assay of interest.
Uses:	Flow Cytometry (Optimal dilution to be determined by the researcher)
Size:	50 µg or 100 µg or 500 µg

Flow Cytometry Image:



Surface staining of mouse splenocytes with 0.5 ug FITC anti-mouse CD11a (M17/4). Appropriate isotype controls were used (open histogram). Total viable cells were used for analysis.

Requested From:

Japan

Laboratory Reagent For In Vitro Research Use Only

Not for resale without prior written consent from LifeSpan BioSciences, Inc.

Created on 9/24/2014

© 2014 LifeSpan BioSciences