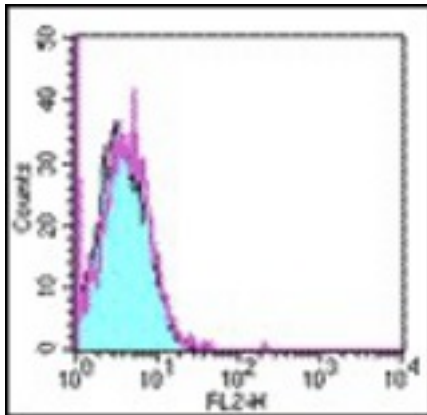


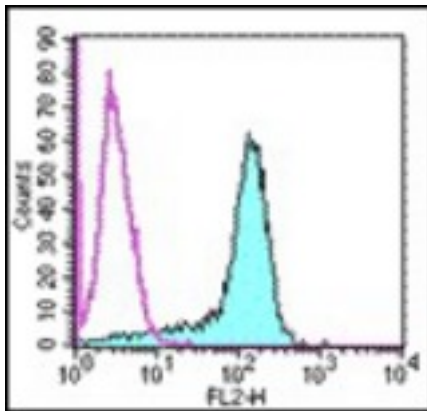
PDCD1LG2 / CD273 / PD-L2 Rat anti-Mouse Monoclonal (PE) (TY25) Antibody - LS-C106284 - LSBio	
<b>CatalogID:</b>	LS-C106284
<b>Target:</b>	programmed cell death 1 ligand 2 (PDCD1LG2)
<b>Synonyms:</b>	PDCD1LG2 Antibody, B7 dendritic cell molecule Antibody, B7-DC Antibody, B7DC Antibody, BA574F11.2 Antibody, CD273 Antibody, Btdc Antibody, CD273 antigen Antibody, PD-L2 Antibody, PDCD1 ligand 2 Antibody, PD-1-ligand 2 Antibody, Programmed death ligand 2 Antibody, Butyrophilin B7-DC Antibody, PD-1 ligand 2 Antibody, PDCD1L2 Antibody, PDL2 Antibody
<b>Host</b>	PDCD1LG2 antibody was produced in Rat
<b>Clonality:</b>	Monoclonal
<b>Isotype:</b>	IgG2a,k
<b>Clone Name:</b>	TY25
<b>Conjugations:</b>	Phycoerythrin (PE)
<b>Immunogen Species:</b>	PDCD1LG2 / CD273 / PD-L2 antibody was raised against Mouse
<b>Immunogen:</b>	PDCD1LG2 / CD273 / PD-L2 antibody was raised against mouse PDCD1LG2
<b>Reactivity:</b>	Mouse
<b>Purification:</b>	Affinity purified
<b>Presentation:</b>	PBS, pH 7.2, 150 mM sodium chloride, 0.09% sodium azide
<b>Recommended Storage:</b>	Store at +4°C. Do not freeze. Product is photosensitive and should be protected from light.
<b>Usage Summary:</b>	The TY25 antibody has been tested by flow cytometric analysis of mouse splenocyte suspensions and B7-DC transfected cells. This can be used at less than or equal to 0.5 ug per test. A test is defined as the amount (ug) of antibody that will stain a cell sample in a final volume of 100 ul. Cell number should be determined empirically but can range from 10 <sup>5</sup> to 10 <sup>8</sup> cells/test. It is recommended that the antibody be carefully titrated for optimal performance in the assay of interest.
<b>Uses:</b>	Flow Cytometry (Optimal dilution to be determined by the researcher)
<b>Size:</b>	50 µg or 100 µg or 200 µg

**Flow Cytometry Image:**



Staining of non-transfected cells with 0.25 ug PE Rat IgG2a isotype control (open histogram) or 0.06 ug PE anti-mouse B7-DC (TY25, colored histogram). Total viable cells were used for analysis.

**Flow Cytometry Image:**



Staining of mouse B7-DC transfected cells with 0.25 ug PE Rat IgG2a isotype control (open histogram) or 0.06 ug PE anti-mouse B7-DC (TY25, colored histogram). Total viable cells were used for analysis.

**Requested From:**

Japan

Laboratory Reagent For In Vitro Research Use Only

Not for resale without prior written consent from LifeSpan BioSciences, Inc.

Created on 9/24/2014

© 2014 LifeSpan BioSciences