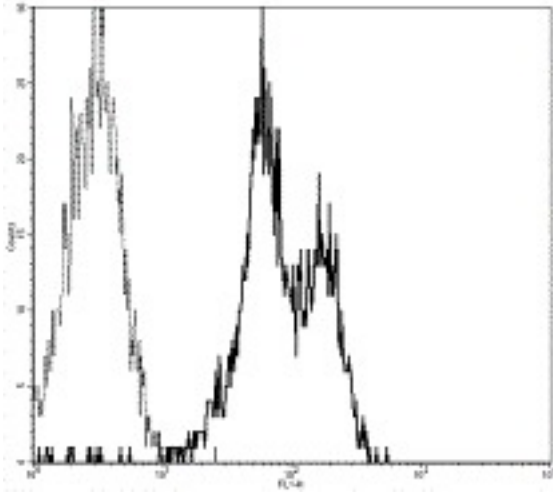


LFA-1 / CD11A Mouse anti-Human Monoclonal (FITC) (HI111) Antibody - LS-C106108 - LSBio	
CatalogID:	LS-C106108
Target:	integrin, alpha L (antigen CD11A (p180), lymphocyte function-associated antigen 1; alpha polypeptide) (ITGAL)
Synonyms:	ITGAL Antibody, CD11A Antibody, Integrin alpha-L Antibody, LFA-1 alpha Antibody, LFA-1A Antibody, Integrin gene promoter Antibody, Alpha polypeptide) Antibody, CD11a antigen Antibody, LFA-1 Antibody, LFA1A Antibody
Family / Subfamily:	Integrin / not assigned-Integrin
Host	ITGAL antibody was produced in Mouse
Clonality:	Monoclonal
Isotype:	IgG1,k
Clone Name:	HI111
Conjugations:	Fluorescein (FITC)
Immunogen Species:	LFA-1 / CD11A antibody was raised against Human
Immunogen:	LFA-1 / CD11A antibody was raised against human ITGAL
Reactivity:	Human
Purification:	Affinity purified
Presentation:	PBS, pH 7.2, 150 mM sodium chloride, 0.09% sodium azide, 0.2% BSA
Recommended Storage:	Store at +4°C. Do not freeze. Product is photosensitive and should be protected from light.
Usage Summary:	The HI111 antibody has been pre-titrated and tested by flow cytometric analysis of human peripheral blood leukocytes. This can be used at 20 ul (1 ug)/per test. A test is defined as the amount (ug)/test of antibody that will stain a cell sample in a final volume of 100 ul. Cell number should be determined empirically but can range from 10 ⁵ to 10 ⁸ cells/test.
Uses:	Flow Cytometry (Optimal dilution to be determined by the researcher)
Size:	25 tst or 100 tst

Flow Cytometry Image:



Profile of FITC conjugated mAb HI111 (CD11a) staining on human peripheral blood lymphocytes.

Requested From:

Japan

Laboratory Reagent For In Vitro Research Use Only

Not for resale without prior written consent from LifeSpan BioSciences, Inc.

Created on 9/24/2014

© 2014 LifeSpan BioSciences