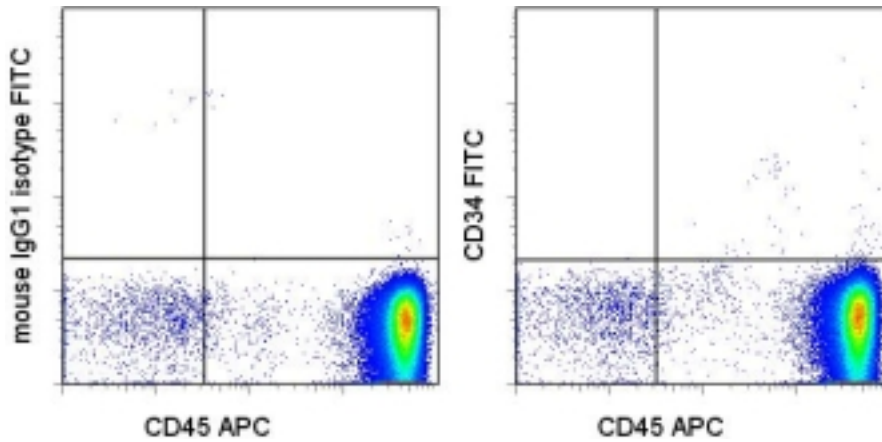


CD34 Mouse anti-Human Monoclonal (FITC) (4H11) Antibody - LS-C106106 - LSBio

<b>CatalogID:</b>	LS-C106106
<b>Target:</b>	CD34 molecule
<b>Synonyms:</b>	CD34 Antibody, CD34 molecule Antibody, CD34 antigen Antibody
<b>Host</b>	CD34 antibody was produced in Mouse
<b>Clonality:</b>	Monoclonal
<b>Isotype:</b>	IgG1
<b>Clone Name:</b>	4H11
<b>Conjugations:</b>	Fluorescein (FITC)
<b>Immunogen Species:</b>	CD34 antibody was raised against Human
<b>Immunogen:</b>	CD34 antibody was raised against human CD34
<b>Reactivity:</b>	Human
<b>Purification:</b>	Affinity purified
<b>Presentation:</b>	Aqueous buffer, 0.09% sodium azide, contains stabilizer if necessary
<b>Recommended Storage:</b>	Store at +4°C. Do not freeze. Product is photosensitive and should be protected from light.
<b>Usage Summary:</b>	This 4H11 antibody has been pre-titrated and tested by flow cytometric analysis of normal human peripheral blood cells. This can be used at 5 ul (0.5 ug)/per test. A test is defined as the amount (ug)/test of antibody that will stain a cell sample in a final volume of 100 ul. Cell number should be determined empirically but can range from 10 <sup>5</sup> to 10 <sup>8</sup> cells/test.
<b>Uses:</b>	Flow Cytometry (Optimal dilution to be determined by the researcher)
<b>Size:</b>	25 tst or 100 tst

**Flow Cytometry Image:**



Staining of normal human peripheral blood cells with APC anti-human CD45 (HI30) and 0.25 ug of FITC Mouse IgG1, K isotype control (left) or FITC anti-human CD34 (4H11) (right). Total viable cells were used for analysis.

**Requested From:**

Japan

Laboratory Reagent For In Vitro Research Use Only

Not for resale without prior written consent from LifeSpan BioSciences, Inc.

Created on 9/24/2014

© 2014 LifeSpan BioSciences