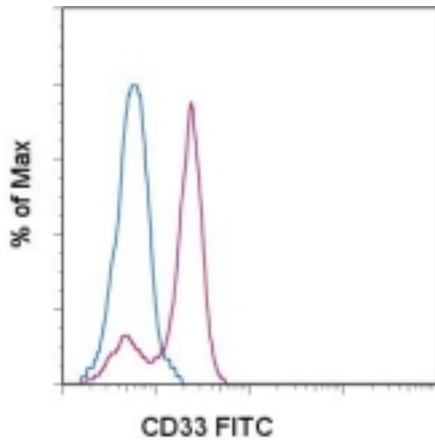


**CD33 Mouse anti-Human Monoclonal (FITC) (P67.6) Antibody - LS-C106105 - LSBio**

<b>CatalogID:</b>	LS-C106105
<b>Target:</b>	CD33 molecule
<b>Synonyms:</b>	CD33 Antibody, CD33 antigen Antibody, CD33 molecule Antibody, gp67 Antibody, SIGLEC-3 Antibody, p67 Antibody, CD33 antigen (gp67) Antibody, SIGLEC3 Antibody
<b>Family / Subfamily:</b>	Immunoglobulin / not assigned-Immunoglobulin
<b>Host</b>	CD33 antibody was produced in Mouse
<b>Clonality:</b>	Monoclonal
<b>Isotype:</b>	IgG1
<b>Clone Name:</b>	P67.6
<b>Conjugations:</b>	Fluorescein (FITC)
<b>Immunogen Species:</b>	CD33 antibody was raised against Human
<b>Immunogen:</b>	CD33 antibody was raised against human CD33
<b>Reactivity:</b>	Human
<b>Purification:</b>	Affinity purified
<b>Presentation:</b>	Aqueous buffer, 0.09% sodium azide, contains stabilizer if necessary
<b>Recommended Storage:</b>	Store at +4°C. Do not freeze. Product is photosensitive and should be protected from light.
<b>Usage Summary:</b>	This P67.6 antibody has been pre-titrated and tested by flow cytometric analysis of lysed whole blood. This can be used at 5 ul (0.06 ug)/per test. A test is defined as the amount (ug)/test of antibody that will stain a cell sample in a final volume of 100 ul. Cell number should be determined empirically but can range from 10 <sup>5</sup> to 10 <sup>8</sup> cells/test.
<b>Uses:</b>	Flow Cytometry (Optimal dilution to be determined by the researcher)
<b>Size:</b>	25 tst or 100 tst

**Flow Cytometry Image:**



Staining of normal human peripheral blood cells with FITC Mouse IgG1, K isotype control (blue histogram) or FITC Human CD33 (purple histogram). Cells in the monocyte gate were used for analysis.

**Requested From:**

Japan

Laboratory Reagent For In Vitro Research Use Only

Not for resale without prior written consent from LifeSpan BioSciences, Inc.

Created on 9/24/2014

© 2014 LifeSpan BioSciences