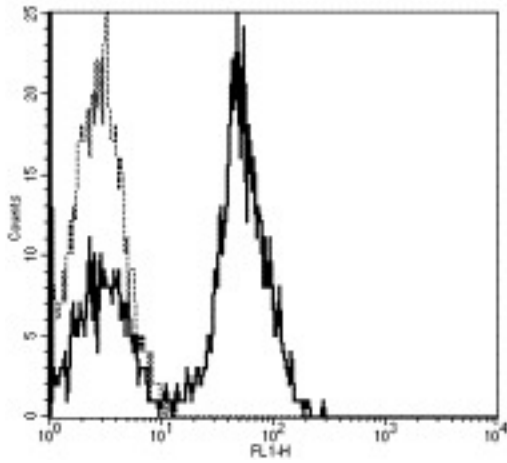


CD28 Mouse anti-Human Monoclonal (FITC) (CD28.2) Antibody - LS-C106065 - LSBio

<b>CatalogID:</b>	LS-C106065
<b>Target:</b>	CD28 molecule
<b>Synonyms:</b>	CD28 Antibody, CD28 antigen Antibody, CD28 antigen (Tp44) Antibody, Tp44 Antibody, CD28 molecule Antibody
<b>Host</b>	CD28 antibody was produced in Mouse
<b>Clonality:</b>	Monoclonal
<b>Isotype:</b>	IgG1,k
<b>Clone Name:</b>	CD28.2
<b>Conjugations:</b>	Fluorescein (FITC)
<b>Immunogen Species:</b>	CD28 antibody was raised against Human
<b>Immunogen:</b>	CD28 antibody was raised against human CD28
<b>Reactivity:</b>	Human
<b>Purification:</b>	Affinity purified
<b>Presentation:</b>	PBS, pH 7.2, 150 mM sodium chloride, 0.09% sodium azide, 0.2% BSA
<b>Recommended Storage:</b>	Store at +4°C. Do not freeze. Product is photosensitive and should be protected from light.
<b>Usage Summary:</b>	The CD28.2 antibody has been pre-titrated and tested by flow cytometric analysis of human peripheral blood leukocytes. This can be used at 20 ul (1 ug)/per test. A test is defined as the amount (ug)/test of antibody that will stain a cell sample in a final volume of 100 ul. Cell number should be determined empirically but can range from 10 <sup>5</sup> to 10 <sup>8</sup> cells/test.
<b>Uses:</b>	Flow Cytometry (Optimal dilution to be determined by the researcher)
<b>Size:</b>	25 tst or 100 tst

**Flow Cytometry Image:**



CD28 expression on human peripheral blood lymphocytes was determined using FITC anti-human CD28 (CD28.2). The dotted line shows autofluorescence and the bold histogram shows the staining of peripheral T cells with anti-CD28.

**Requested From:**

Japan

Laboratory Reagent For In Vitro Research Use Only

Not for resale without prior written consent from LifeSpan BioSciences, Inc.

Created on 9/24/2014

© 2014 LifeSpan BioSciences