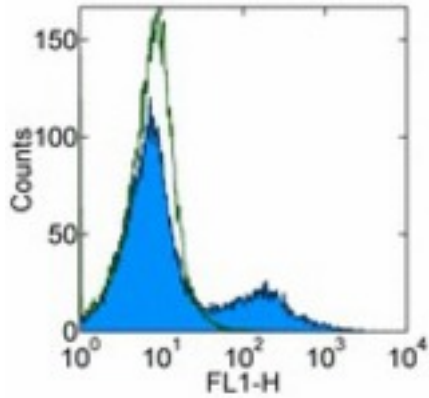


CD36 Mouse anti-Human Monoclonal (FITC) (NL07) Antibody - LS-C106061 - LSBio

| | |
|-----------------------------|---------------------------------------------------------------------------------------------------------------------------------------------------------------------------------------------------------------------------------------------------------------------------------------------------------------------------------------------------------------------------------------------------------------------------------------------------------------------------------------|
| CatalogID: | LS-C106061 |
| Target: | CD36 molecule (thrombospondin receptor) |
| Synonyms: | CD36 Antibody, Cluster determinant 36 Antibody, FAT Antibody, Fatty acid translocase Antibody, Glycoprotein IIIb Antibody, gp4 Antibody, GPIIIB Antibody, GPIV Antibody, PAS-4 protein Antibody, PAS IV Antibody, PASIV Antibody, Platelet collagen receptor Antibody, Platelet glycoprotein IV Antibody, SCARB3 Antibody, Thrombospondin receptor Antibody, BDPLT10 Antibody, CD36 antigen Antibody, CHDS7 Antibody, gp3B Antibody, PAS-4 Antibody, Platelet glycoprotein 4 Antibody |
| Host | CD36 antibody was produced in Mouse |
| Clonality: | Monoclonal |
| Isotype: | IgM |
| Clone Name: | NL07 |
| Conjugations: | Fluorescein (FITC) |
| Immunogen Species: | CD36 antibody was raised against Human |
| Immunogen: | CD36 antibody was raised against human CD36 |
| Reactivity: | Human |
| Purification: | Affinity purified |
| Presentation: | PBS, pH 7.2, <=0.09% sodium azide |
| Recommended Storage: | Store at +4°C. Do not freeze. Product is photosensitive and should be protected from light. |
| Usage Summary: | This NL07 (NL07) antibody has been pre-titrated and tested by flow cytometric analysis. This can be used at 20 ul (0.25 ug)/per test. A test is defined as the amount (ug)/test of antibody that will stain a cell sample in a final volume of 100 ul. Cell number should be determined empirically but can range from 10 ⁵ to 10 ⁸ cells/test. |
| Uses: | Flow Cytometry (Optimal dilution to be determined by the researcher) |
| Size: | 25 tst or 100 tst |

Flow Cytometry Image:



Staining of normal human peripheral blood cells with 0.25 ug of FITC Mouse IgM isotype control (open histogram) or FITC anti-human CD36 (NL07) (colored histogram). Total viable cells were used for analysis.

Requested From:

Japan

Laboratory Reagent For In Vitro Research Use Only

Not for resale without prior written consent from LifeSpan BioSciences, Inc.

Created on 9/24/2014

© 2014 LifeSpan BioSciences