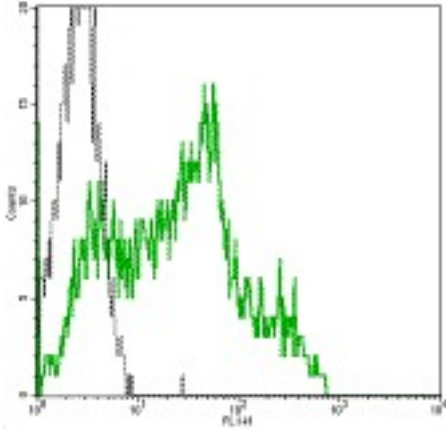


CD38 Mouse anti-Human Monoclonal (FITC) (HIT2) Antibody - LS-C106059 - LSBio

CatalogID:	LS-C106059
Target:	CD38 molecule
Synonyms:	CD38 Antibody, ADP-ribosyl cyclase 1 Antibody, CD38 antigen (p45) Antibody, CD38 antigen Antibody, Cyclic ADP-ribose hydrolase 1 Antibody, T10 Antibody, CADPr hydrolase 1 Antibody, CD38 molecule Antibody, NAD(+) nucleosidase Antibody
Host	CD38 antibody was produced in Mouse
Clonality:	Monoclonal
Isotype:	IgG1,k
Clone Name:	HIT2
Conjugations:	Fluorescein (FITC)
Immunogen Species:	CD38 antibody was raised against Human
Immunogen:	CD38 antibody was raised against human CD38
Reactivity:	Human
Purification:	Affinity purified
Presentation:	PBS, pH 7.2, 150 mM sodium chloride, 0.09% sodium azide, 0.2% BSA
Recommended Storage:	Store at +4°C. Do not freeze. Product is photosensitive and should be protected from light.
Usage Summary:	The HIT2 antibody has been pre-titrated and tested by flow cytometric analysis of human peripheral blood leukocytes. This can be used at 5 ul (1.0 ug)/per test. A test is defined as the amount (ug)/test of antibody that will stain a cell sample in a final volume of 100 ul. Cell number should be determined empirically but can range from 10 ⁵ to 10 ⁸ cells/test. Please refer to the antibody vial for the recommended test volume to use for one million cells in a 100 ul total staining volume.
Uses:	Flow Cytometry (Optimal dilution to be determined by the researcher)
Size:	25 tst or 100 tst

Flow Cytometry Image:



FITC anti-human CD38 (HIT2) staining on normal human peripheral blood lymphocytes.

Requested From:

Japan

Laboratory Reagent For In Vitro Research Use Only

Not for resale without prior written consent from LifeSpan BioSciences, Inc.

Created on 9/24/2014

© 2014 LifeSpan BioSciences