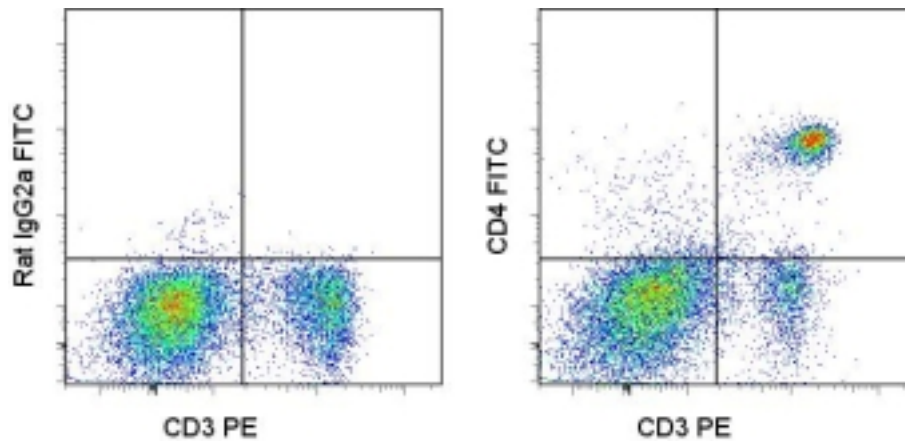


**CD4 Rat anti-Mouse Monoclonal (FITC) (RM4-5) Antibody - LS-C106049 - LSBio**

<b>CatalogID:</b>	LS-C106049
<b>Target:</b>	CD4 molecule
<b>Synonyms:</b>	CD4 Antibody, CD4 antigen Antibody, CD4 receptor Antibody, CD4mut Antibody, CD4 antigen (p55) Antibody, CD4 molecule Antibody
<b>Host</b>	CD4 antibody was produced in Rat
<b>Clonality:</b>	Monoclonal
<b>Isotype:</b>	IgG2a,k
<b>Clone Name:</b>	RM4-5
<b>Conjugations:</b>	Fluorescein (FITC)
<b>Immunogen Species:</b>	CD4 antibody was raised against Mouse
<b>Immunogen:</b>	CD4 antibody was raised against mouse CD4
<b>Reactivity:</b>	Mouse
<b>Purification:</b>	Affinity purified
<b>Presentation:</b>	PBS, pH 7.2, 150 mM sodium chloride, 0.09% sodium azide
<b>Recommended Storage:</b>	Store at +4°C. Do not freeze. Product is photosensitive and should be protected from light.
<b>Usage Summary:</b>	The RM4-5 antibody has been tested by flow cytometric analysis of mouse thymocyte and splenocyte suspensions. This can be used at less than or equal to 0.25 ug per test. A test is defined as the amount (ug) of antibody that will stain a cell sample in a final volume of 100 ul. Cell number should be determined empirically but can range from 10 <sup>5</sup> to 10 <sup>8</sup> cells/test. It is recommended that the antibody be carefully titrated for optimal performance in the assay of interest.
<b>Uses:</b>	Flow Cytometry (Optimal dilution to be determined by the researcher)
<b>Size:</b>	50 µg or 100 µg or 500 µg

**Flow Cytometry Image:**



Staining of C57Bl/6 splenocytes with PE anti-mouse CD3e (145-2C11) (LS-C107143) and 0.125 ug of FITC Rat IgG2a Isotype Control (left) or 0.125 ug of FITC anti-mouse CD4 (RM4-5) (right). Cells in the lymphocyte gate were used for analysis.

**Requested From:**

Japan

Laboratory Reagent For In Vitro Research Use Only

Not for resale without prior written consent from LifeSpan BioSciences, Inc.

Created on 9/24/2014

© 2014 LifeSpan BioSciences