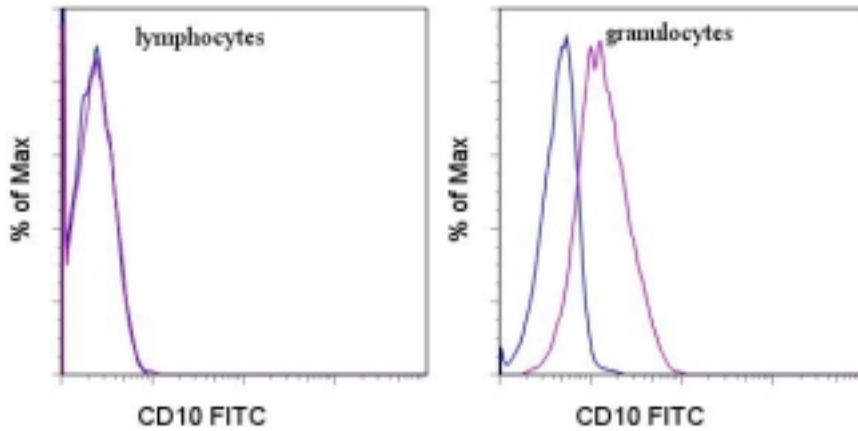


MME / CD10 Mouse anti-Human Monoclonal (FITC) (CB-CALLA) Antibody - LS-C106028 - LSBio	
CatalogID:	LS-C106028
Target:	membrane metallo-endoropeptidase (MME)
Synonyms:	MME Antibody, Atriopeptidase Antibody, CALLA Antibody, CD10 Antibody, EPN Antibody, Membrane metallo-endoropeptidase Antibody, NEP Antibody, Neprilysin Antibody, Neutral endopeptidase Antibody, Neutral endopeptidase 24.11 Antibody, CD10 antigen Antibody, Enkephalinase Antibody, Neprylisin Antibody, SFE Antibody, Skin fibroblast elastase Antibody
Family / Subfamily:	Protease / Metallopeptidase M13
Host	MME antibody was produced in Mouse
Clonality:	Monoclonal
Isotype:	IgG2b
Clone Name:	CB-CALLA
Conjugations:	Fluorescein (FITC)
Immunogen Species:	MME / CD10 antibody was raised against Human
Immunogen:	MME / CD10 antibody was raised against human MME
Reactivity:	Human
Purification:	Affinity purified
Presentation:	Aqueous buffer, 0.09% sodium azide, contains stabilizer if necessary
Recommended Storage:	Store at +4°C. Do not freeze. Product is photosensitive and should be protected from light.
Usage Summary:	This CB-CALLA (CB-CALLA) antibody has been pre-titrated and tested by flow cytometric analysis of normal human peripheral blood leukocytes. This can be used at 20 ul (0.125 ug)/per test. A test is defined as the amount (ug)/test of antibody that will stain a cell sample in a final volume of 100 ul. Cell number should be determined empirically but can range from 10 ⁵ to 10 ⁸ cells/test.
Uses:	Flow Cytometry (Optimal dilution to be determined by the researcher)
Size:	25 tst or 100 tst

Flow Cytometry Image:



Staining of normal human peripheral blood cells with 0.125 ug of FITC Mouse IgG2b isotype control (blue histogram) or FITC anti-human CD10 (CB-CALLA) (purple histogram).

Requested From:

Japan

Laboratory Reagent For In Vitro Research Use Only

Not for resale without prior written consent from LifeSpan BioSciences, Inc.

Created on 9/24/2014

© 2014 LifeSpan BioSciences