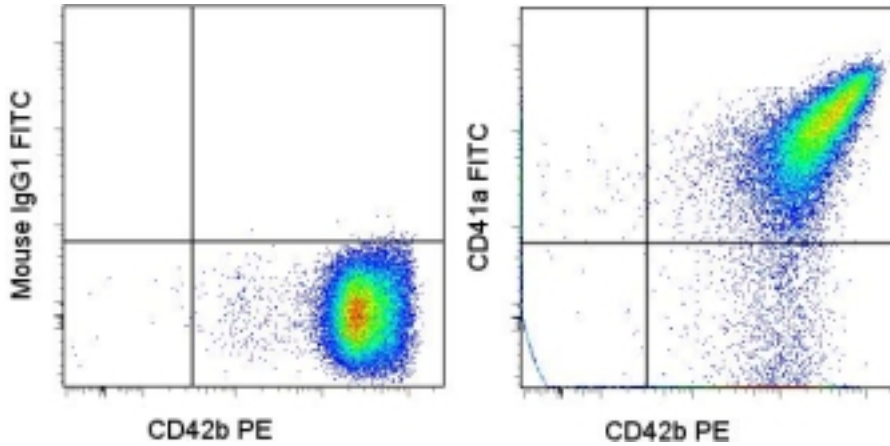


ITGA2B / CD41 Mouse anti-Human Monoclonal (FITC) (HIP8) Antibody - LS-C106023 - LSBio	
CatalogID:	LS-C106023
Target:	integrin, alpha 2b (platelet glycoprotein IIb of IIb/IIIa complex, antigen CD41) (ITGA2B)
Synonyms:	ITGA2B Antibody, BDPLT2 Antibody, CD41B Antibody, GT Antibody, gp2B Antibody, Integrin alpha-IIb Antibody, ITGAB Antibody, GPIIb Antibody, HPA3 Antibody, Platelet-specific antigen BAK Antibody, CD41 Antibody, CD41 antigen Antibody, GPalpha IIb Antibody, GTA Antibody
Family / Subfamily:	Integrin / not assigned-Integrin
Host	ITGA2B antibody was produced in Mouse
Clonality:	Monoclonal
Isotype:	IgG1,k
Clone Name:	HIP8
Conjugations:	Fluorescein (FITC)
Immunogen Species:	ITGA2B / CD41 antibody was raised against Human
Immunogen:	ITGA2B / CD41 antibody was raised against human ITGA2B
Reactivity:	Human
Purification:	Affinity purified
Presentation:	PBS, pH 7.2, 150 mM sodium chloride, 0.09% sodium azide, 0.2% BSA
Recommended Storage:	Store at +4°C. Do not freeze. Product is photosensitive and should be protected from light.
Usage Summary:	The HIP8 antibody has been pre-titrated and tested by flow cytometric analysis of human peripheral blood leukocytes. This can be used at 5 ul (0.25 ug)/per test. A test is defined as the amount (ug)/test of antibody that will stain a cell sample in a final volume of 100 ul. Cell number should be determined empirically but can range from 10 ⁵ to 10 ⁸ cells/test.
Uses:	Flow Cytometry (Optimal dilution to be determined by the researcher)
Size:	25 tst or 100 tst

Flow Cytometry Image:



Staining of human platelets with PE anti-human CD42b (HIP1) (LS-C106338) and FITC Mouse IgG1, K isotype control (left) or FITC anti-human CD41a (HIP8) (right). total events were used for analysis.

Requested From:

Japan

Laboratory Reagent For In Vitro Research Use Only

Not for resale without prior written consent from LifeSpan BioSciences, Inc.

Created on 9/24/2014

© 2014 LifeSpan BioSciences