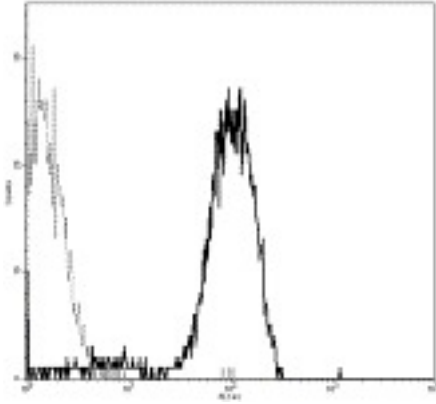


GP1BA / CD42B Mouse anti-Human Monoclonal (FITC) (HIP1) Antibody - LS-C106022 - LSBio	
CatalogID:	LS-C106022
Target:	glycoprotein Ib (platelet), alpha polypeptide (GP1BA)
Synonyms:	GP1BA Antibody, Antigen CD42b-alpha Antibody, CD42b antigen Antibody, BDPLT3 Antibody, CD42b-alpha Antibody, DBPLT3 Antibody, Glycoprotein Ibalpha Antibody, GPIbA Antibody, GP-Ib alpha Antibody, gp1B Antibody, GPIb-alpha Antibody, BDPLT1 Antibody, BSS Antibody, CD42B Antibody, gp1BA Antibody, VWDP Antibody
Host	GP1BA antibody was produced in Mouse
Clonality:	Monoclonal
Isotype:	IgG1,k
Clone Name:	HIP1
Conjugations:	Fluorescein (FITC)
Immunogen Species:	GP1BA / CD42B antibody was raised against Human
Immunogen:	GP1BA / CD42B antibody was raised against human ITGA2B
Reactivity:	Human
Purification:	Affinity purified
Presentation:	PBS, pH 7.2, 150 mM sodium chloride, 0.09% sodium azide, 0.2% BSA
Recommended Storage:	Store at +4°C. Do not freeze. Product is photosensitive and should be protected from light.
Usage Summary:	The HIP1 antibody has been pre-titrated and tested by flow cytometric analysis of human platelets. This can be used at 20 ul (1 ug)/per test. A test is defined as the amount (ug)/test of antibody that will stain a cell sample in a final volume of 100 ul. Cell number should be determined empirically but can range from 10 ⁵ to 10 ⁸ cells/test.
Uses:	Flow Cytometry (Optimal dilution to be determined by the researcher)
Size:	25 tst or 100 tst

Flow Cytometry Image:



FITC labeled HIP1 (CD42b) staining on human platelets.

Requested From:

Japan

Laboratory Reagent For In Vitro Research Use Only

Not for resale without prior written consent from LifeSpan BioSciences, Inc.

Created on 9/24/2014

© 2014 LifeSpan BioSciences