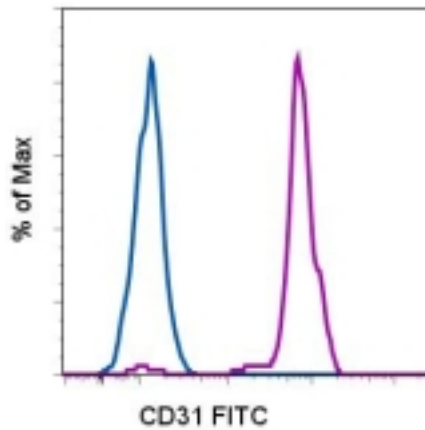


PECAM-1 / CD31 Mouse anti-Human Monoclonal (FITC) (WM-59 (WM59)) Antibody - LS-C106017 - LSBio	
CatalogID:	LS-C106017
Target:	platelet/endothelial cell adhesion molecule 1 (PECAM1)
Synonyms:	PECAM1 Antibody, CD31 Antibody, CD31 antigen Antibody, EndoCAM Antibody, PECA1 Antibody, PECAM-1 Antibody, GPIIA Antibody
Host	PECAM1 antibody was produced in Mouse
Clonality:	Monoclonal
Isotype:	IgG1,k
Clone Name:	WM-59 (WM59)
Conjugations:	Fluorescein (FITC)
Immunogen Species:	PECAM-1 / CD31 antibody was raised against Human
Immunogen:	PECAM-1 / CD31 antibody was raised against human PECAM1
Reactivity:	Human
Purification:	Affinity purified
Presentation:	PBS, pH 7.2, 150 mM sodium chloride, 0.09% sodium azide, 0.2% BSA
Recommended Storage:	Store at +4°C. Do not freeze. Product is photosensitive and should be protected from light.
Usage Summary:	This WM-59 (WM59) antibody has been pre-titrated and tested by flow cytometric analysis of human peripheral blood leukocytes. This can be used at 5 µL (0.5 ug) per test. A test is defined as the amount (ug) of antibody that will stain a cell sample in a final volume of 100 µL. Cell number should be determined empirically but can range from 10 ⁵ to 10 ⁸ cells/test.
Uses:	Flow Cytometry (Optimal dilution to be determined by the researcher)
Size:	25 tst or 100 tst

Flow Cytometry Image:



Staining of normal human peripheral blood cells with FITC Mouse IgG1, K Isotype Control (blue histogram) or FITC anti-human CD31 (purple histogram). Cells in the monocyte gate were used for analysis.

Requested From:

Japan

Laboratory Reagent For In Vitro Research Use Only

Not for resale without prior written consent from LifeSpan BioSciences, Inc.

Created on 9/24/2014

© 2014 LifeSpan BioSciences