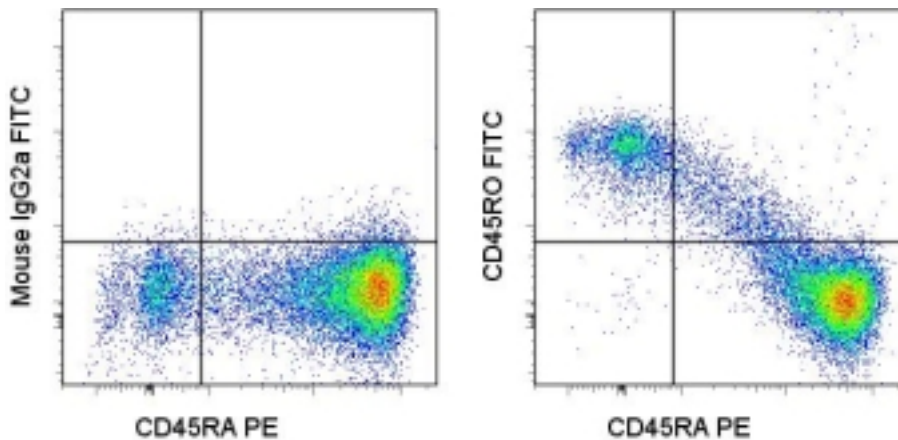


CD45RO Mouse anti-Human Monoclonal (FITC) (UCHL1) Antibody - LS-C106016 - LSBio

CatalogID:	LS-C106016
Target:	CD45RO
Host	CD45RO antibody was produced in Mouse
Clonality:	Monoclonal
Isotype:	IgG2a,k
Clone Name:	UCHL1
Conjugations:	Fluorescein (FITC)
Immunogen Species:	CD45RO antibody was raised against Human
Immunogen:	CD45RO antibody was raised against human CD45RO
Reactivity:	Human
Purification:	Affinity purified
Presentation:	PBS, pH 7.2, 150 mM sodium chloride, 0.09% sodium azide, 0.2% BSA
Recommended Storage:	Store at +4°C. Do not freeze. Product is photosensitive and should be protected from light.
Usage Summary:	The UCHL1 antibody has been pre-titrated and tested by flow cytometric analysis of human peripheral blood leukocytes. This can be used at 20 ul (0.5 ug)/per test. A test is defined as the amount (ug)/test of antibody that will stain a cell sample in a final volume of 100 ul. Cell number should be determined empirically but can range from 10 ⁵ to 10 ⁸ cells/test.
Uses:	Flow Cytometry (Optimal dilution to be determined by the researcher)
Size:	25 tst or 100 tst

Flow Cytometry Image:



Staining of normal human peripheral blood cells with PE anti-human CD45RA (HI100) (LS-C106068) and FITC Mouse IgG2a, kappa Isotype Control (left) or FITC anti-human CD45RO (UCHL1) (right). Cells in the lymphocyte gate were used for analysis.

Requested From:	Japan
Laboratory Reagent For In Vitro Research Use Only	
Not for resale without prior written consent from LifeSpan BioSciences, Inc.	
Created on 9/24/2014	
© 2014 LifeSpan BioSciences	