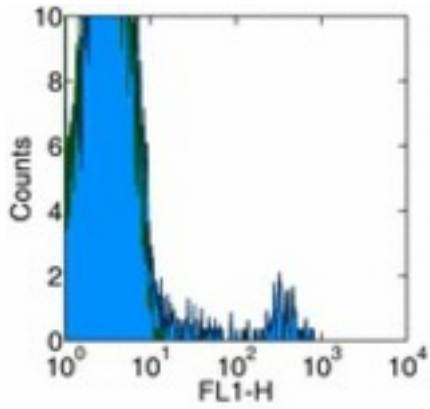


**Granulocyte Mouse anti-Rat Monoclonal (FITC) (HIS48) Antibody - LS-C105899 - LSBio**

<b>CatalogID:</b>	LS-C105899
<b>Target:</b>	Granulocyte
<b>Host</b>	Granulocyte antibody was produced in Mouse
<b>Clonality:</b>	Monoclonal
<b>Isotype:</b>	IgM
<b>Clone Name:</b>	HIS48
<b>Conjugations:</b>	Fluorescein (FITC)
<b>Immunogen Species:</b>	Granulocyte antibody was raised against Rat
<b>Immunogen:</b>	Granulocyte antibody was raised against rat Granulocyte
<b>Reactivity:</b>	Rat
<b>Purification:</b>	Affinity purified
<b>Presentation:</b>	aqueous buffer, 0.09% sodium azide, may contain carrier protein/stabilizer
<b>Recommended Storage:</b>	Store at +4°C. Do not freeze. Product is photosensitive and should be protected from light.
<b>Usage Summary:</b>	This HIS48 antibody has been tested by flow cytometric analysis of rat splenocyte suspensions. This can be used at less than or equal to 0.25 ug per test. A test is defined as the amount (ug) of antibody that will stain a cell sample in a final volume of 100 ul. Cell number should be determined empirically but can range from 10 <sup>5</sup> to 10 <sup>8</sup> cells/test. It is recommended that the antibody be carefully titrated for optimal performance in the assay of interest.
<b>Uses:</b>	Flow Cytometry (Optimal dilution to be determined by the researcher)
<b>Size:</b>	100 µg
<b>Concentration:</b>	0.5 mg/ml

**Flow Cytometry Image:**



Surface staining of rat splenocytes with anti-rat Granulocytes (HIS48) FITC. Appropriate isotype controls were used (open histogram). Total viable cells were used for analysis.

**Requested From:**

Japan

Laboratory Reagent For In Vitro Research Use Only

Not for resale without prior written consent from LifeSpan BioSciences, Inc.

Created on 9/24/2014

© 2014 LifeSpan BioSciences