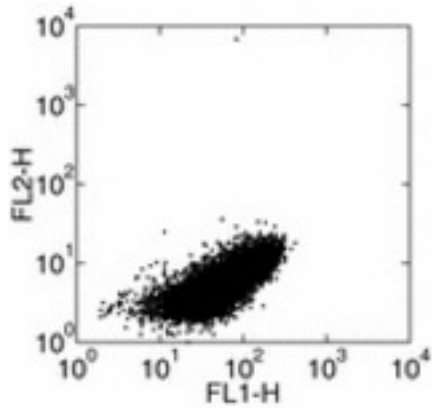


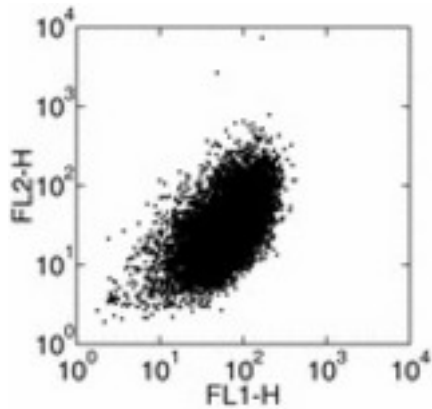
IL1A / IL1 Alpha Hamster anti-Mouse Monoclonal (FITC) (ALF-161) Antibody - LS-C105895 - LSBio	
CatalogID:	LS-C105895
Target:	interleukin 1, alpha (IL1A)
Synonyms:	IL1A Antibody, Hematopoietin-1 Antibody, IL-1 alpha Antibody, IL1 Antibody, IL1-ALPHA Antibody, IL1 Alpha Antibody, Interleukin-1 alpha Antibody, IL-1A Antibody, IL1F1 Antibody, Pro-interleukin-1-alpha Antibody, Preinterleukin 1 alpha Antibody, Interleukin 1, alpha Antibody
Family / Subfamily:	IL-1 / not assigned-IL-1
Host	IL1A antibody was produced in Hamster
Clonality:	Monoclonal
Isotype:	IgG
Clone Name:	ALF-161
Conjugations:	Fluorescein (FITC)
Immunogen Species:	IL1A / IL1 Alpha antibody was raised against Mouse
Immunogen:	IL1A / IL1 Alpha antibody was raised against mouse IL1A
Reactivity:	Mouse
Purification:	Affinity purified
Presentation:	PBS, pH 7.2, 150 mM sodium chloride, 0.09% sodium azide
Recommended Storage:	Store at +4°C. Do not freeze. Product is photosensitive and should be protected from light.
Usage Summary:	The fluorochrome-conjugated ALF-161 antibody has been tested by intracellular staining for flow cytometric analysis of thioglycollate-elicited, LPS-activated, fixed/permeabilized mouse peritoneal exudate cells. It is offered in 2 formats:- ug size: This can be used at at less than or equal to 0.5 ug per test. A test is defined as the amount (ug)/test of antibody that will stain a cell sample in a final volume of 100 ul. Cell number should be determined empirically but can range from 10 ⁵ to 10 ⁸ cells/test. It is recommended that the antibody be carefully titrated for optimal performance in the assay of interest. - test size: has been pre-titrated and tested. This can be used at test size: 20 ul (0.25 ug)/per test The pre-titrated test size contains 0.2% BSA.
Uses:	Flow Cytometry (Optimal dilution to be determined by the researcher)
Size:	25 tst or 50 µg or 100 µg

Flow Cytometry Image:



Mouse thioglycollate induced PEC were stimulated with LPS in the presence of Brefeldin A for 22 hours. The cells were surface stained with FITC anti-mouse CD11b and intracellularly stained with PE anti-mouse IL-1a (ALF-161).

Flow Cytometry Image:



Mouse thioglycollate induced PEC were stimulated with intracellularly stained with PE rat IgG2b isotype control. The cells were surface stained with FITC anti-mouse CD11b and intracellularly stained with PE anti-mouse IL-1a (ALF-161).

Requested From:

Japan

Laboratory Reagent For In Vitro Research Use Only

Not for resale without prior written consent from LifeSpan BioSciences, Inc.

Created on 9/24/2014

© 2014 LifeSpan BioSciences