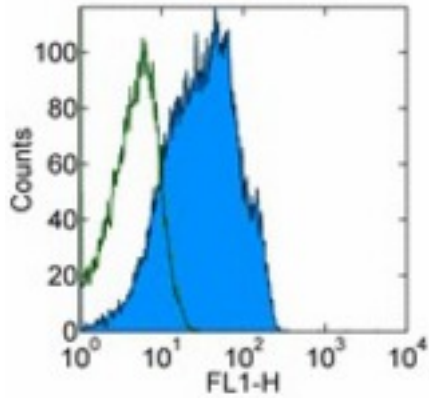


CD55 Mouse anti-Human Monoclonal (FITC) (143-30) Antibody - LS-C105889 - LSBio

CatalogID:	LS-C105889
Target:	CD55 molecule, decay accelerating factor for complement (Cromer blood group)
Synonyms:	CD55 Antibody, CD55 antigen Antibody, Decay-accelerating factor Antibody, TC Antibody, CR Antibody, CROM Antibody, DAF Antibody
Host	CD55 antibody was produced in Mouse
Clonality:	Monoclonal
Isotype:	IgG1,k
Clone Name:	143-30
Conjugations:	Fluorescein (FITC)
Immunogen Species:	CD55 antibody was raised against Human
Immunogen:	CD55 antibody was raised against human CD55
Reactivity:	Human
Purification:	Affinity purified
Presentation:	PBS, pH 7.2, 150 mM sodium chloride, 0.09% sodium azide, 0.2% BSA
Recommended Storage:	Store at +4°C. Do not freeze. Product is photosensitive and should be protected from light.
Usage Summary:	This 143-30 antibody has been pre-titrated and tested by flow cytometric analysis of human peripheral blood leukocytes. This can be used at 5 ul (0.5 ug)/per test. A test is defined as the amount (ug)/test of antibody that will stain a cell sample in a final volume of 100 ul. Cell number should be determined empirically but can range from 10 ⁵ to 10 ⁸ cells/test.
Uses:	Flow Cytometry (Optimal dilution to be determined by the researcher)
Size:	25 tst or 100 tst

Flow Cytometry Image:



Surface staining of normal human peripheral blood cells with with FITC mouse IgG1 isotype control (open histogram) or FITC anti-human CD55 (143-30, colored histogram). Total viable cells were used for analysis.

Requested From:

Japan

Laboratory Reagent For In Vitro Research Use Only

Not for resale without prior written consent from LifeSpan BioSciences, Inc.

Created on 9/24/2014

© 2014 LifeSpan BioSciences