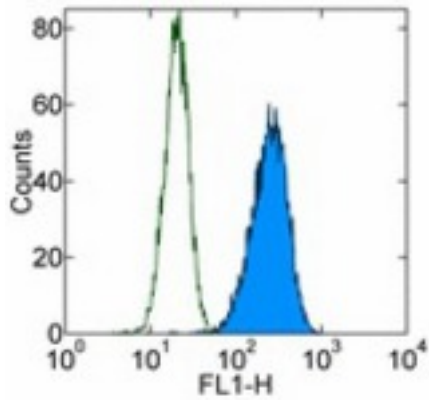


Integrin Alpha V Beta 3 Mouse anti-Human Monoclonal (FITC) (23C6) Antibody - LS-C105813 - LSBio

CatalogID:	LS-C105813
Target:	Integrin AlphaV Beta3 CD51/CD61/ITGAV/ITGB3
Host	Mouse
Clonality:	Monoclonal
Isotype:	IgG1,k
Clone Name:	23C6
Conjugations:	Fluorescein (FITC)
Immunogen Species:	Human
Immunogen:	Human ITGAV
Reactivity:	Human
Non-Reactivity:	Chimpanzee, Baboon, Pig, Cynomolgus monkey, Rhesus monkey
Purification:	Affinity purified
Presentation:	PBS, pH 7.2, <=0.09% sodium azide, BSA and/or gelatin
Recommended Storage:	Store at +4°C. Do not freeze. Product is photosensitive and should be protected from light.
Usage Summary:	The 23C6 antibody has been pre-titrated and tested by flow cytometric analysis of human melanoma cell line and peripheral blood leukocytes. This can be used at 5 ul (1 ug)/per test. A test is defined as the amount (ug)/test of antibody that will stain a cell sample in a final volume of 100 ul. Cell number should be determined empirically but can range from 10 ⁵ to 10 ⁸ cells/test.
Uses:	Flow Cytometry (Optimal dilution to be determined by the researcher)
Size:	25 tst or 100 tst

Flow Cytometry Image:



Staining of M21 cells with FITC Mouse IgG1, K isotype control (open histogram) or FITC anti-human CD51/CD61 (23C6) (colored histogram). Total viable cells were used for analysis.

Requested From:

Japan

Laboratory Reagent For In Vitro Research Use Only

Not for resale without prior written consent from LifeSpan BioSciences, Inc.

Created on 9/24/2014

© 2014 LifeSpan BioSciences