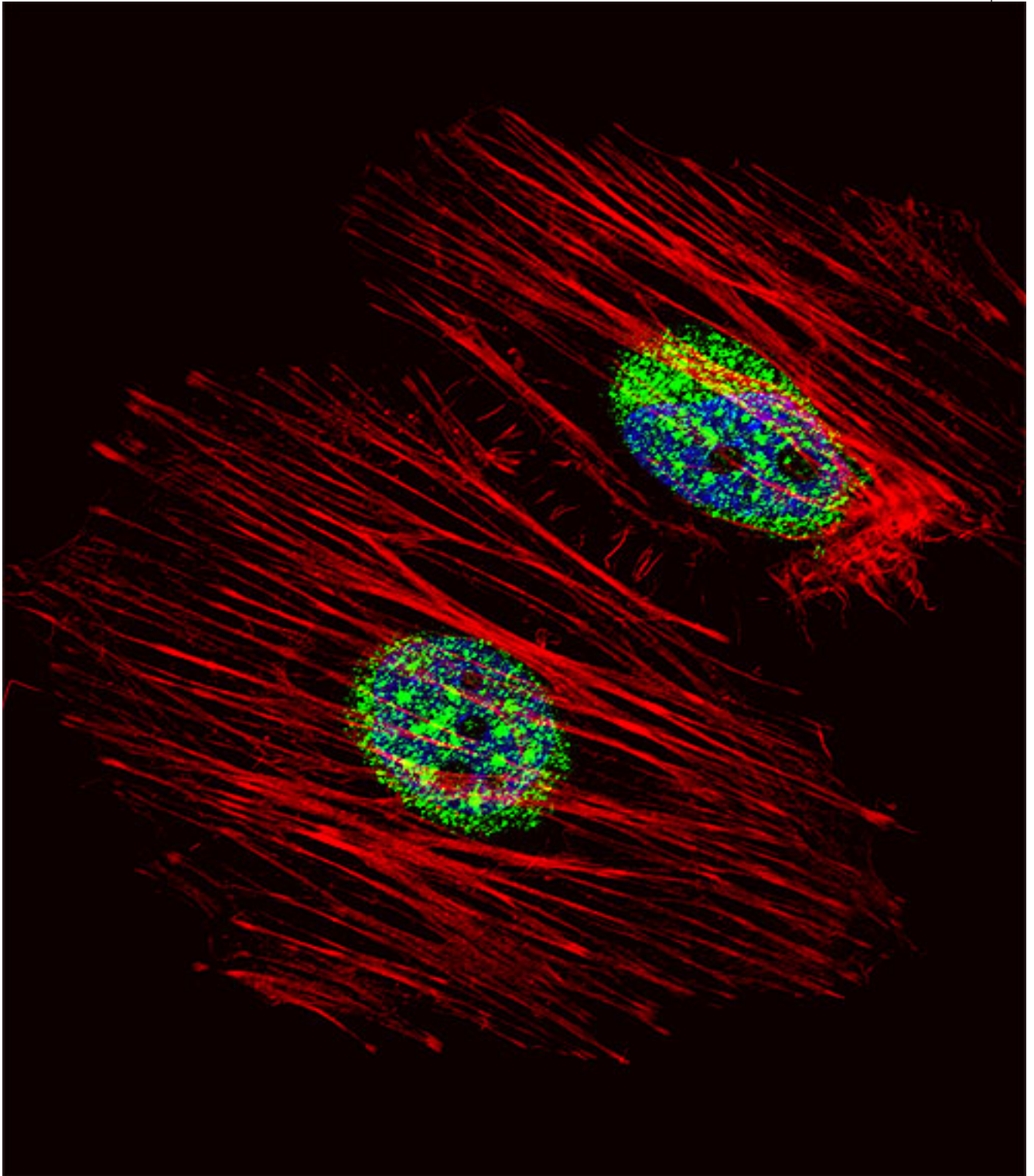


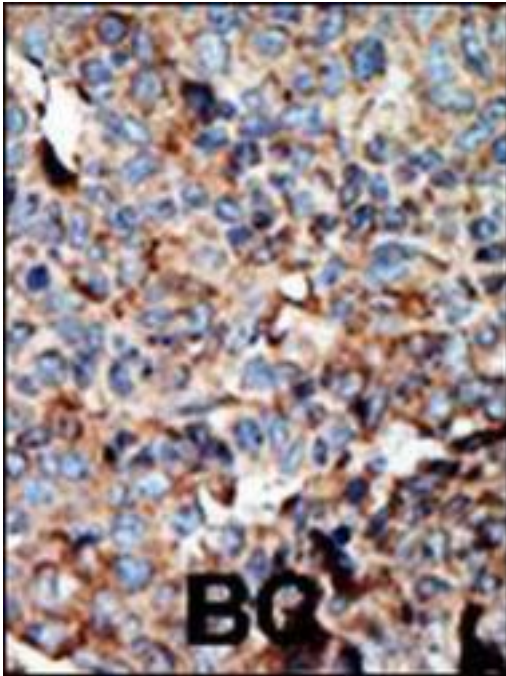
NME2 / NM23 Rabbit anti-Human Polyclonal (N-Terminus) Antibody - LS-C101173 - LSBio	
<b>CatalogID:</b>	LS-C101173
<b>Target:</b>	NME/NM23 nucleoside diphosphate kinase 2 (NME2)
<b>Synonyms:</b>	NME2 Antibody, Histidine protein kinase NDKB Antibody, NDKB Antibody, NM23-H2 Antibody, PUF Antibody, NDP kinase B Antibody, NDPK-B Antibody, C-myc transcription factor Antibody, NDK B Antibody, NDPKB Antibody, NM23 Antibody, NM23B Antibody
<b>Host</b>	NME2 antibody was produced in Rabbit
<b>Clonality:</b>	Polyclonal
<b>Immunogen Species:</b>	NME2 / NM23 antibody was raised against Human
<b>Antigen Type:</b>	Synthetic peptide
<b>Immunogen:</b>	NME2 / NM23 antibody was raised against kLH conjugated synthetic peptide selected from the N-terminal region of human NME2.
<b>Epitope:</b>	N-Terminus
<b>Reactivity:</b>	Human, Mouse
<b>Purification:</b>	Immunoaffinity purified
<b>Presentation:</b>	PBS, 0.09% sodium azide
<b>Recommended Storage:</b>	Maintain refrigerated at 2-8°C for up to 6 months. For long term storage store at -20°C.
<b>Uses:</b>	IHC - Paraffin (1:50 - 1:100), Immunofluorescence (1:10 - 1:50), Western blot (1:1000) (Optimal dilution to be determined by the researcher)
<b>Size:</b>	400 µl

**Immunohistochemistry Image:**



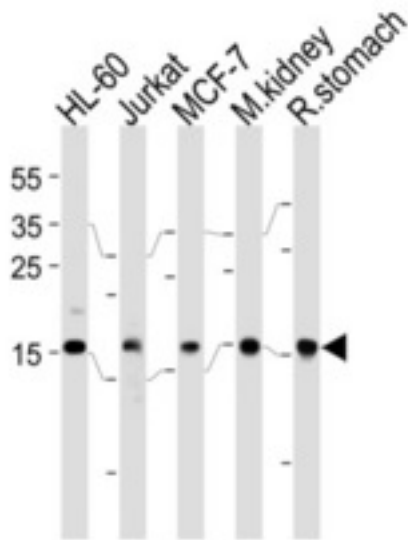
Formalin-fixed and paraffin-embedded human cancer tissue reacted with the primary antibody, which was peroxidase-conjugated to the secondary antibody, followed by AEC staining. BC = breast carcinoma; HC = hepatocarcinoma.

**Western Blot Image:**



Western blot of anti-NME2 Antibody (N-term) LS-C101173 in NCI-H460 cell line lysates (35 ug/lane). NME2(arrow) was detected using the purified Pab.

**Western Blot Image:**



Western blot of anti-NME2 Pab LS-C101173 in mouse brain tissue lysate. NME2 (arrow) was detected using purified Pab. Secondary HRP-anti-rabbit was used for signal visualization with chemiluminescence.

**Requested From:**

Japan

Laboratory Reagent For In Vitro Research Use Only

Not for resale without prior written consent from LifeSpan BioSciences, Inc.

Created on 9/24/2014

© 2014 LifeSpan BioSciences