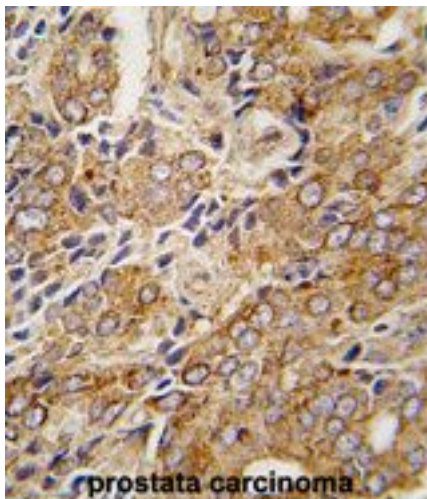


**TRPM8 Rabbit anti-Human Polyclonal (C-Terminus) Antibody - LS-C100968 - LSBio**

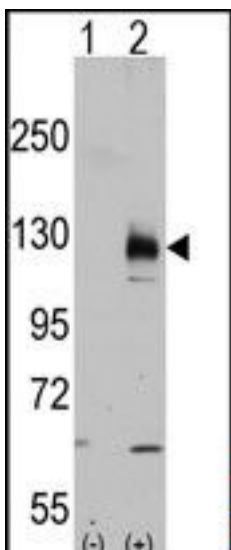
<b>CatalogID:</b>	LS-C100968
<b>Target:</b>	transient receptor potential cation channel, subfamily M, member 8 (TRPM8)
<b>Synonyms:</b>	TRPM8 Antibody, CMR1 Antibody, Cold-menthol receptor type 1 Antibody, LTrpC-6 Antibody, TRPP8 Antibody, Trp-p8 Antibody, LTRPC6 Antibody
<b>Family / Subfamily:</b>	Ion Channel / Calcium channel - TRP
<b>Host</b>	TRPM8 antibody was produced in Rabbit
<b>Clonality:</b>	Polyclonal
<b>Immunogen Species:</b>	TRPM8 antibody was raised against Human
<b>Antigen Type:</b>	Synthetic peptide
<b>Immunogen:</b>	TRPM8 antibody was raised against kLH conjugated synthetic peptide at the C-term(C940) of human TRPM8.
<b>Epitope:</b>	C-Terminus
<b>Reactivity:</b>	Human
<b>Purification:</b>	Ammonium sulfate precipitation
<b>Presentation:</b>	PBS, 0.09% sodium azide
<b>Recommended Storage:</b>	Maintain refrigerated at 2-8°C for up to 6 months. For long term storage store at -20°C.
<b>Uses:</b>	IHC - Paraffin (1:10 - 1:50), Western blot (1:1000) (Optimal dilution to be determined by the researcher)
<b>Uses Not Recommended:</b>	IHC - Paraffin
<b>Size:</b>	400 µl

**Immunohistochemistry Image:**



Formalin-fixed and paraffin-embedded human prostate carcinoma tissue reacted with TRPM8 antibody (C-term C940) LS-C100968, which was peroxidase-conjugated to the secondary antibody, followed by DAB staining.

**Western Blot Image:**



Western blot of TRPM8 (arrow) using rabbit polyclonal TRPM8 Antibody (C-term C940) LS-C100968.293 cell lysates (2 ug/lane) either nontransfected (Lane 1) or transiently transfected with the TRPM8 gene (Lane 2).

**Requested From:**

Japan

Laboratory Reagent For In Vitro Research Use Only

Not for resale without prior written consent from LifeSpan BioSciences, Inc.

Created on 9/24/2014

© 2014 LifeSpan BioSciences