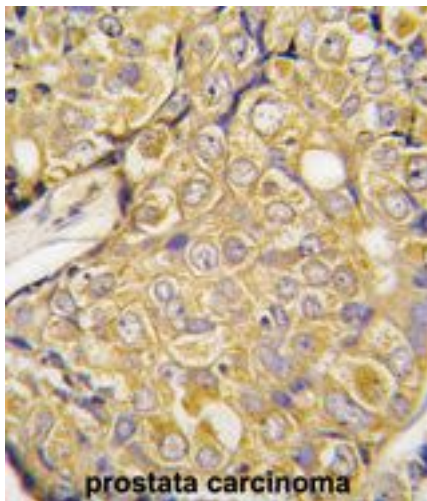


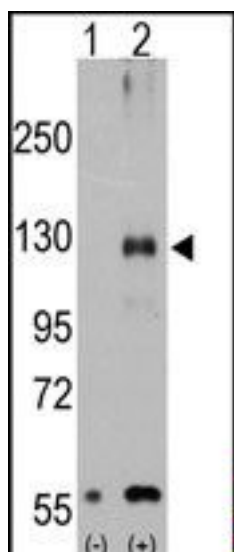
TRPM8 Rabbit anti-Human Polyclonal (Internal) Antibody - LS-C100967 - LSBio	
CatalogID:	LS-C100967
Target:	transient receptor potential cation channel, subfamily M, member 8 (TRPM8)
Synonyms:	TRPM8 Antibody, CMR1 Antibody, Cold-menthol receptor type 1 Antibody, LTrpC-6 Antibody, TRPP8 Antibody, Trp-p8 Antibody, LTRPC6 Antibody
Family / Subfamily:	Ion Channel / Calcium channel - TRP
Host	TRPM8 antibody was produced in Rabbit
Clonality:	Polyclonal
Immunogen Species:	TRPM8 antibody was raised against Human
Antigen Type:	Synthetic peptide
Immunogen:	TRPM8 antibody was raised against kLH conjugated synthetic peptide at the Center(R536) of human TRPM8.
Epitope:	Internal
Reactivity:	Human
Purification:	Ammonium sulfate precipitation
Presentation:	PBS, 0.09% sodium azide
Recommended Storage:	Maintain refrigerated at 2-8°C for up to 6 months. For long term storage store at -20°C.
Uses:	IHC - Paraffin (1:10 - 1:50), Western blot (1:1000) (Optimal dilution to be determined by the researcher)
Uses Not Recommended:	IHC - Paraffin
Size:	400 µl

Immunohistochemistry Image:



Formalin-fixed and paraffin-embedded human prostate carcinoma tissue reacted with TRPM8 antibody (Center R536) , which was peroxidase-conjugated to the secondary antibody, followed by DAB staining. This data demonstrates the use of this antibody for immunohistochemistry; clinical relevance has not been evaluated.

Western Blot Image:



Western blot analysis of TRPM8 (arrow) using rabbit polyclonal TRPM8 Antibody (Center R536).293 cell lysates (2 ug/lane) either nontransfected (Lane 1) or transiently transfected with the TRPM8 gene (Lane 2) (Origene Technologies).

Requested From:

Japan

Laboratory Reagent For In Vitro Research Use Only

Not for resale without prior written consent from LifeSpan BioSciences, Inc.

Created on 9/24/2014

© 2014 LifeSpan BioSciences