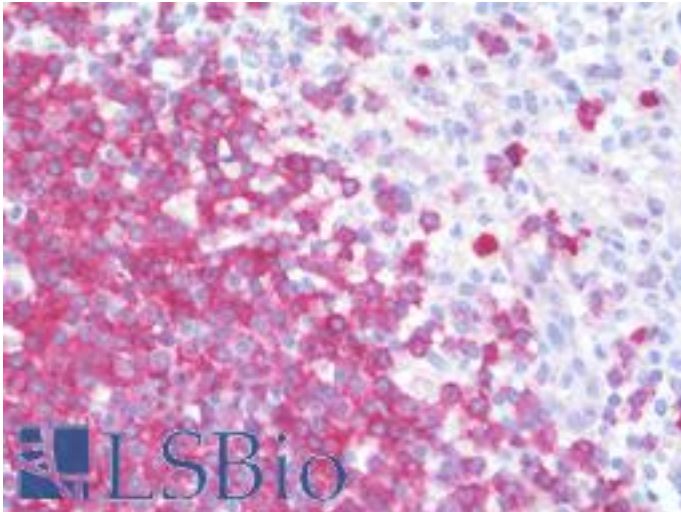


CD22 Mouse anti-Human Monoclonal (1B1) Antibody - LS-B9996 - LSBio

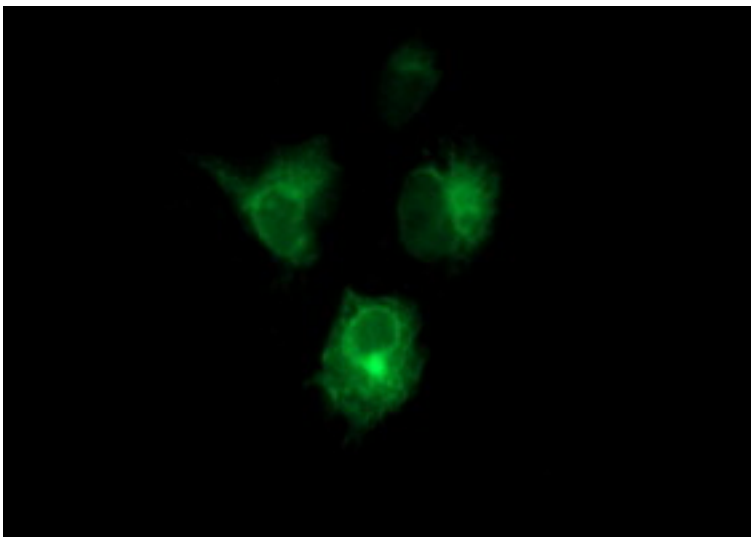
CatalogID:	LS-B9996
Validation:	This antibody replaces catalog number LS-C174777. It has been validated for use in the following assays: IHC-P.
Target:	CD22 molecule
Synonyms:	CD22 Antibody, CD22 molecule Antibody, CD22 antigen Antibody, SIGLEC2 Antibody, SIGLEC-2 Antibody, T-cell surface antigen Leu-14 Antibody, B-cell receptor CD22 Antibody, BL-CAM Antibody
Family / Subfamily:	Immunoglobulin / not assigned-Immunoglobulin
Host	CD22 antibody was produced in Mouse
Clonality:	Monoclonal
Isotype:	IgG1
Clone Name:	1B1
Immunogen Species:	CD22 antibody was raised against Human
Antigen Type:	Recombinant protein
Immunogen:	CD22 antibody was raised against full length human recombinant protein of human CD22(NP_001762) produced in HEK293T cell.
Specificity:	Human CD22
Reactivity:	Human
Purification:	Protein A/G purified
Presentation:	PBS, pH 7.3, 1% BSA, 50% glycerol, 0.02% sodium azide
Recommended Storage:	Store at -20°C. Minimize freezing and thawing.
Uses:	IHC - Paraffin (5 µg/ml), Immunofluorescence (1:100), Western blot (1:4000) (Optimal dilution to be determined by the researcher)
Size:	50 µl
Concentration:	1 mg/ml

Immunohistochemistry Image:



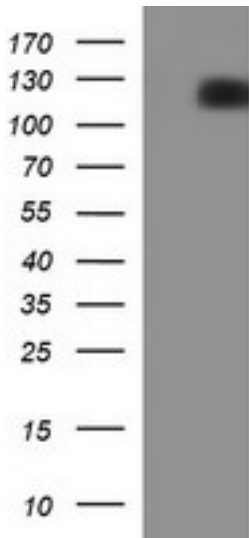
Human Spleen: Formalin-Fixed, Paraffin-Embedded (FFPE)

Immunofluorescence Image:



Anti-CD22 mouse monoclonal antibody immunofluorescent staining of COS7 cells transiently transfected by pCMV6-ENTRY CD22.

Western Blot Image:



HEK293T cells were transfected with the pCMV6-ENTRY control (Left lane) or pCMV6-ENTRY CD22 (Right lane) cDNA for 48 hrs and lysed. Equivalent amounts of cell lysates (5 ug per lane) were separated by SDS-PAGE and immunoblotted with anti-CD22.

Requested From:

Japan

Laboratory Reagent For In Vitro Research Use Only

Not for resale without prior written consent from LifeSpan BioSciences, Inc.

Created on 9/24/2014

© 2014 LifeSpan BioSciences