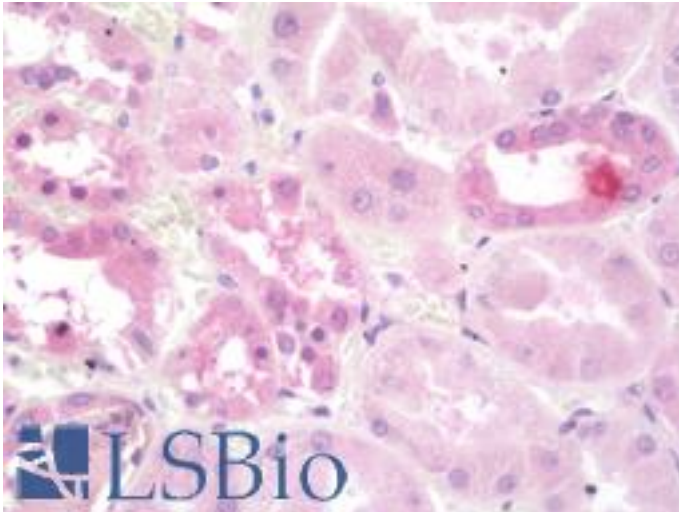


**ATP6AP2 / Renin Receptor Rabbit anti-Human Polyclonal (aa205-234) Antibody - LS-B9982 - LSBio**

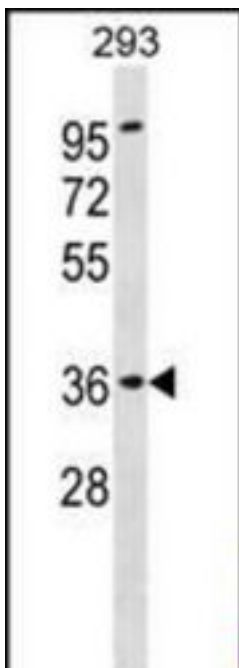
<b>CatalogID:</b>	LS-B9982
<b>Validation:</b>	This antibody replaces catalog number LS-C157566. It has been validated for use in the following assays: IHC-P.
<b>Target:</b>	ATPase, H <sup>+</sup> transporting, lysosomal accessory protein 2 (ATP6AP2)
<b>Synonyms:</b>	ATP6AP2 Antibody, APT6M8-9 Antibody, ATP6M8-9 Antibody, ELDF10 Antibody, HT028 Antibody, MSTP009 Antibody, Renin receptor Antibody, M8-9 Antibody, N14F Antibody, Renin/prorenin receptor Antibody, ATP6IP2 Antibody, V-ATPase M8.9 subunit Antibody, CAPER Antibody, MRXE Antibody, XMRE Antibody
<b>Family / Subfamily:</b>	Transporter / ATPase - V type
<b>Host</b>	ATP6AP2 antibody was produced in Rabbit
<b>Clonality:</b>	Polyclonal
<b>Immunogen Species:</b>	ATP6AP2 / Renin Receptor antibody was raised against Human
<b>Antigen Type:</b>	Synthetic peptide
<b>Immunogen:</b>	ATP6AP2 / Renin Receptor antibody was raised against kLH-conjugated synthetic peptide from internal region of human ATP6AP2.
<b>Specificity:</b>	Human Renin Receptor / ATP6AP2
<b>Epitope:</b>	aa205-234
<b>Reactivity:</b>	Human
<b>Purification:</b>	Immunoaffinity purified
<b>Presentation:</b>	PBS, 0.09% sodium azide
<b>Recommended Storage:</b>	Maintain refrigerated at 2-8°C for up to 6 months. For long term storage store at -20°C.
<b>Uses:</b>	IHC - Paraffin (1:100), Western blot (1:1000) (Optimal dilution to be determined by the researcher)
<b>Size:</b>	200 µl

**Immunohistochemistry Image:**



Human Kidney: Formalin-Fixed, Paraffin-Embedded (FFPE)

**Western Blot Image:**



ATP6AP2 Antibody (Center) Western blot of 293 cell line lysates (35 ug/lane). This demonstrates the ATP6AP2 antibody detected the ATP6AP2 protein (arrow).

**Requested From:**

Japan

Laboratory Reagent For In Vitro Research Use Only

Not for resale without prior written consent from LifeSpan BioSciences, Inc.

Created on 9/24/2014

© 2014 LifeSpan BioSciences