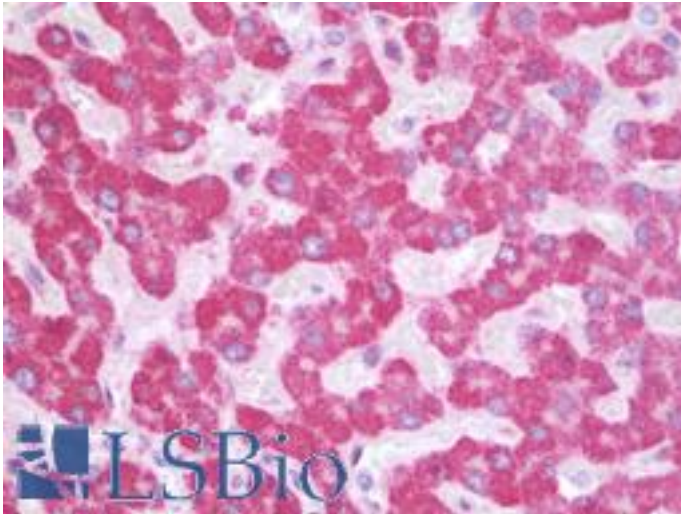


SIK1 / MSK Rabbit anti-Human Polyclonal (C-Terminus) Antibody - LS-B9981 - LSBio

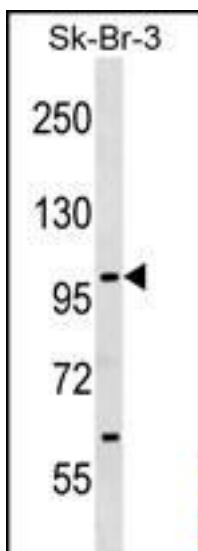
CatalogID:	LS-B9981
Validation:	This antibody replaces catalog number LS-C101200. It has been validated for use in the following assays: IHC-P.
Target:	salt-inducible kinase 1 (SIK1)
Synonyms:	SIK1 Antibody, KID2 Antibody, Salt-inducible kinase Antibody, Salt-inducible kinase 1 Antibody, Salt-inducible protein kinase Antibody, SIK Antibody, MSK Antibody, SIK-1 Antibody, SNF1-like kinase Antibody, Myocardial SNF1-like kinase Antibody, QIK Antibody, Qin-induced kinase Antibody, SNF1LK Antibody
Family / Subfamily:	Protein Kinase / AMPK/SNF1
Host	SIK1 antibody was produced in Rabbit
Clonality:	Polyclonal
Immunogen Species:	SIK1 / MSK antibody was raised against Human
Immunogen:	SIK1 / MSK antibody was raised against kLH conjugated synthetic peptide between 567-597 amino acids from the C-terminal region of human SNF1LK.
Epitope:	C-Terminus
Reactivity:	Human, Mouse
Purification:	Ammonium sulfate precipitation
Presentation:	PBS, 0.09% sodium azide
Recommended Storage:	Maintain refrigerated at 2-8°C for up to 6 months. For long term storage store at -20°C.
Uses:	IHC - Paraffin (1:100), Western blot (1:1000) (Optimal dilution to be determined by the researcher)
Size:	200 µl

Immunohistochemistry Image:



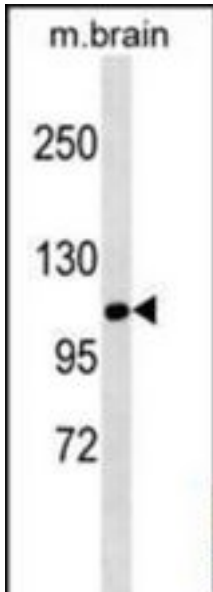
Human Liver: Formalin-Fixed, Paraffin-Embedded (FFPE)

Immunohistochemistry Image:



Western blot of SNF1LK antibody to detect SNF1LK in Sk-Br-3 cell lysate.

Western Blot Image:



SNF1LK Antibody (C-term) western blot analysis in mouse brain tissue lysates (35 ug/lane). This demonstrates the SNF1LK antibody detected the SNF1LK protein (arrow).

Requested From:

Japan

Laboratory Reagent For In Vitro Research Use Only

Not for resale without prior written consent from LifeSpan BioSciences, Inc.

Created on 9/24/2014

© 2014 LifeSpan BioSciences