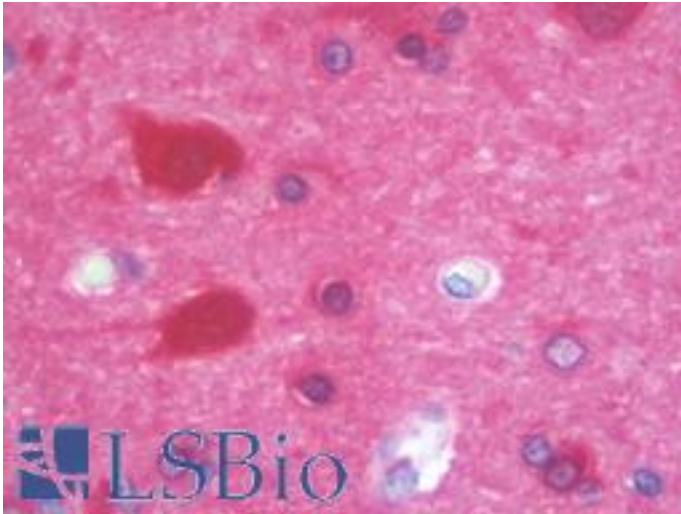


MAPRE2 / EB2 Mouse anti-Human Monoclonal (1F3) Antibody - LS-B9959 - LSBio

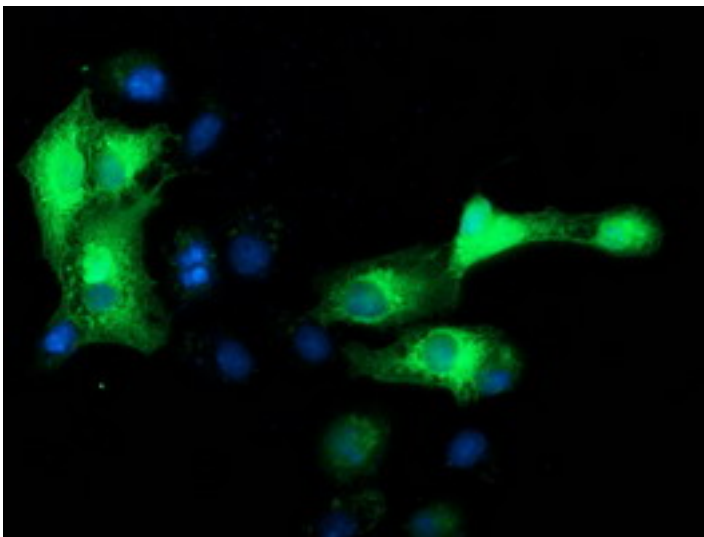
CatalogID:	LS-B9959
Validation:	This antibody replaces catalog number LS-C172948. It has been validated for use in the following assays: IHC-P.
Target:	microtubule-associated protein, RP/EB family, member 2 (MAPRE2)
Synonyms:	MAPRE2 Antibody, APC-binding protein EB2 Antibody, APC-binding protein EB1 Antibody, EB1 Antibody, EB2 Antibody, End-binding protein 2 Antibody
Host	MAPRE2 antibody was produced in Mouse
Clonality:	Monoclonal
Isotype:	IgG2a
Clone Name:	1F3
Immunogen Species:	MAPRE2 / EB2 antibody was raised against Human
Antigen Type:	Recombinant protein
Immunogen:	MAPRE2 / EB2 antibody was raised against full length human recombinant protein of human MAPRE2 (NP_055083) produced in HEK293T cell.
Specificity:	Human MAPRE2 / EB2
Reactivity:	Human
Purification:	Protein A/G purified
Presentation:	PBS, pH 7.3, 1% BSA, 50% glycerol, 0.02% sodium azide
Recommended Storage:	Store at -20°C. Minimize freezing and thawing.
Uses:	IHC - Paraffin (20 µg/ml), Immunofluorescence (1:100), Western blot (1:2000), Flow Cytometry (1:100) (Optimal dilution to be determined by the researcher)
Size:	50 µl
Concentration:	0.81 mg/ml

Immunohistochemistry Image:



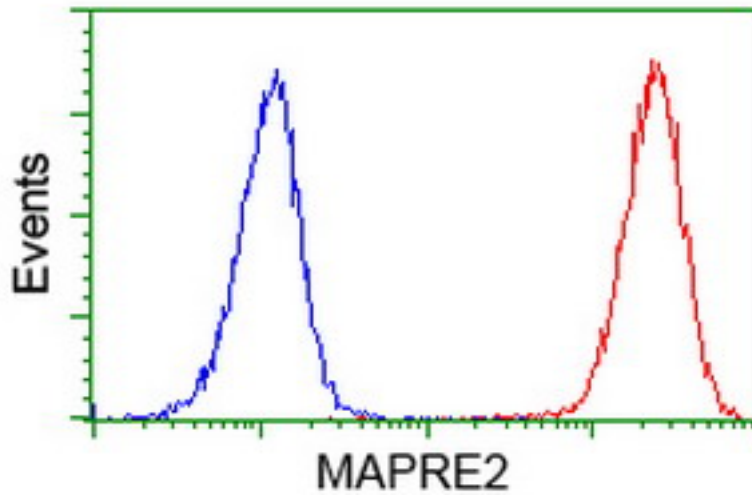
Human Brain, Cortex: Formalin-Fixed, Paraffin-Embedded (FFPE)

Immunofluorescence Image:



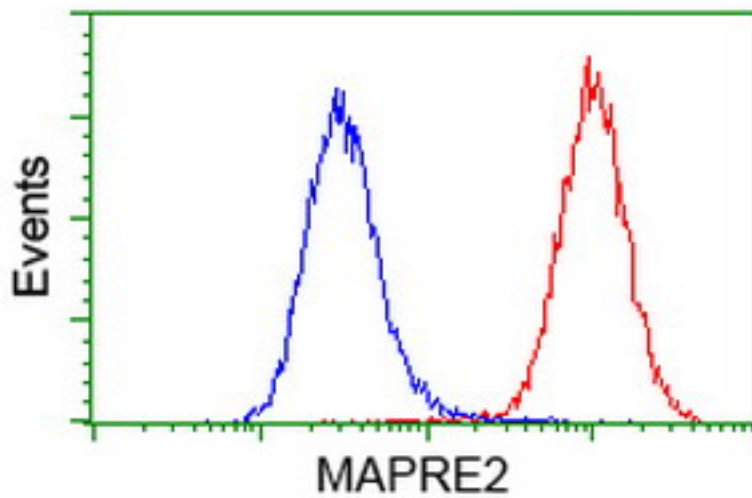
Anti-MAPRE2 mouse monoclonal antibody immunofluorescent staining of COS7 cells transiently transfected by pCMV6-ENTRY MAPRE2.

Flow Cytometry Image:



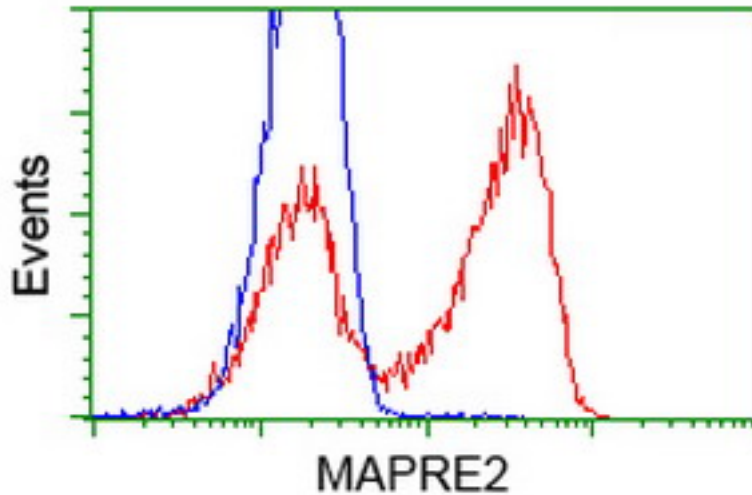
Flow cytometry of Jurkat cells, using anti-MAPRE2 antibody (Red), compared to a nonspecific negative control antibody (Blue).

Flow Cytometry Image:



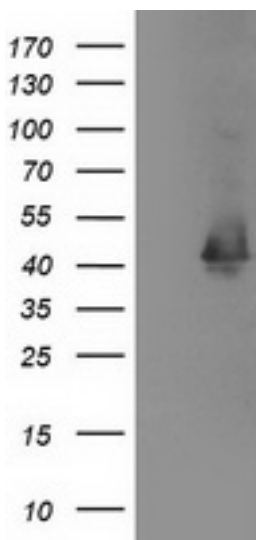
Flow cytometry of HeLa cells, using anti-MAPRE2 antibody (Red), compared to a nonspecific negative control antibody (Blue).

Flow Cytometry Image:



HEK293T cells transfected with either overexpress plasmid (Red) or empty vector control plasmid (Blue) were immunostained by anti-MAPRE2 antibody, and then analyzed by flow cytometry.

Western Blot Image:



HEK293T cells were transfected with the pCMV6-ENTRY control (Left lane) or pCMV6-ENTRY MAPRE2 (Right lane) cDNA for 48 hrs and lysed. Equivalent amounts of cell lysates (5 ug per lane) were separated by SDS-PAGE and immunoblotted with anti-MAPRE2.

Requested From:

Japan

Laboratory Reagent For In Vitro Research Use Only

Not for resale without prior written consent from LifeSpan BioSciences, Inc.

Created on 9/24/2014

© 2014 LifeSpan BioSciences