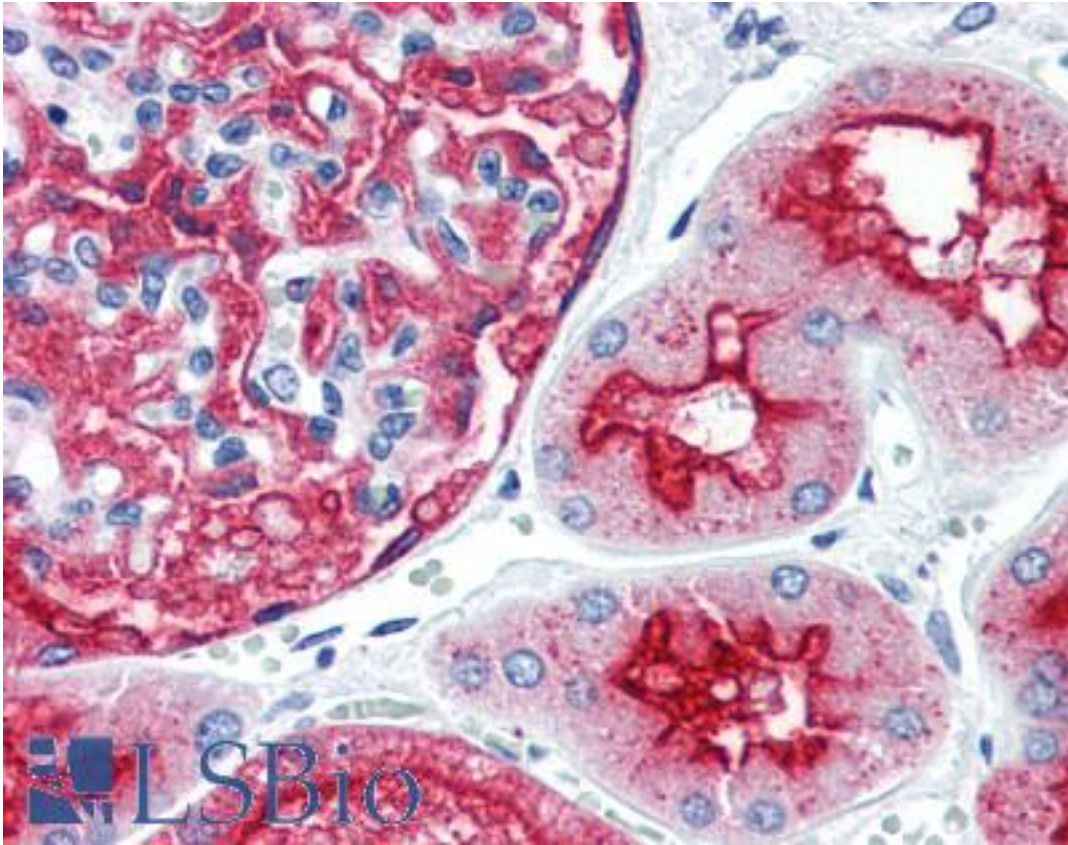


MME / CD10 Rabbit anti-Human Polyclonal (E19-P) Antibody - LS-B9955 - LSBio	
CatalogID:	LS-B9955
Validation:	This antibody replaces catalog number LS-C103470. It has been validated for use in the following assays: IHC-P.
Target:	membrane metallo-endoropeptidase (MME)
Synonyms:	MME Antibody, Atriopeptidase Antibody, CALLA Antibody, CD10 Antibody, EPN Antibody, Membrane metallo-endoropeptidase Antibody, NEP Antibody, Nepriylsin Antibody, Neutral endopeptidase Antibody, Neutral endopeptidase 24.11 Antibody, CD10 antigen Antibody, Enkephalinase Antibody, Neprylisin Antibody, SFE Antibody, Skin fibroblast elastase Antibody
Family / Subfamily:	Protease / Metallopeptidase M13
Host	MME antibody was produced in Rabbit
Clonality:	Polyclonal
Clone Name:	E19-P
Immunogen Species:	MME / CD10 antibody was raised against Human
Immunogen:	MME / CD10 antibody was raised against peptide derived from the C-terminal sequence of human CD10
Specificity:	Human CD10
Purification:	Purified
Presentation:	20 mM Tris-HCl, pH 8.0, 20 mg/ml BSA, 0.05% sodium azide
Recommended Storage:	Store at Store at -20°C.
Uses:	IHC - Paraffin (1:100 - 1:200) (Optimal dilution to be determined by the researcher)
Size:	100 µl

Immunohistochemistry Image:



Kidney: Formalin-Fixed, Paraffin-Embedded (FFPE)

Requested From:

Japan

Laboratory Reagent For In Vitro Research Use Only

Not for resale without prior written consent from LifeSpan BioSciences, Inc.

Created on 9/24/2014

© 2014 LifeSpan BioSciences