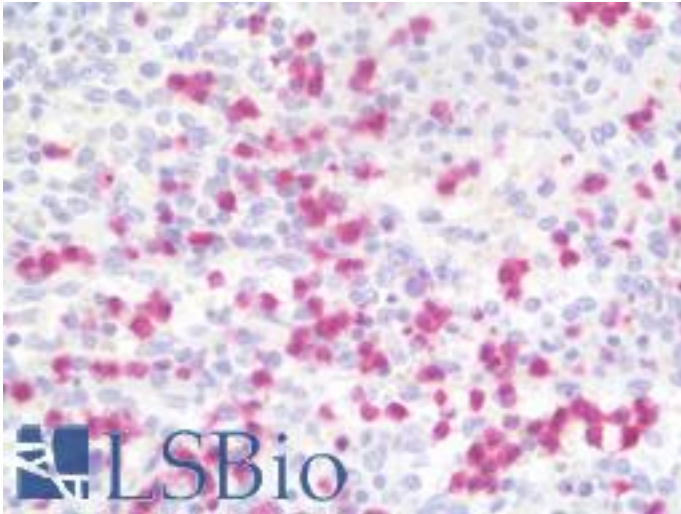


Macrophage Mouse anti-Human Monoclonal (MAC387) Antibody - LS-B9953 - LSBio

CatalogID:	LS-B9953
Validation:	This antibody replaces catalog number LS-C170905. It has been validated for use in the following assays: IHC-P.
Target:	Macrophage
Host	Macrophage antibody was produced in Mouse
Clonality:	Monoclonal
Isotype:	IgG1
Clone Name:	MAC387
Immunogen Species:	Macrophage antibody was raised against Human
Immunogen:	Macrophage antibody was raised against affinity purified monocyte membrane preparation.
Specificity:	Calprotectin.
Reactivity:	Human, Baboon, Monkey, Mouse, Rat, Cat, Dog, Guinea pig, Pig, Rabbit
Purification:	Purified
Presentation:	20 mM Tris-borate, 150 mM sodium chloride, dialyzed media RPMI 1640/D-MEM, Fetal Bovine Serum, BMC-6 Carrier Polysaccharides, Carrier Protein, 0.05% sodium azide, pH 7.5
Recommended Storage:	Short term +4°C; Long term -20°C
Usage Summary:	This antibody can be used on formalin-fixed, paraffin-embedded tissue sections. Prolonged fixation in buffered formalin can destroy the epitope. This antibody may be used at a dilution 1:50 in IHC. Predigestion with trypsin @ 1 mg/ml PBS, 10 mins. at 37 C. or a high temperature antigenic unmasking technique (boiling tissue sections in 10 mM citrate, pH 6.0 for 10-20 mins., followed by cooling to RT for 10-20 mins.) is required.
Uses:	IHC - Paraffin (1:50) (Optimal dilution to be determined by the researcher)
Size:	250 µl
Concentration:	0.2 mg/ml

Immunohistochemistry Image:



Human Spleen: Formalin-Fixed, Paraffin-Embedded (FFPE)

Requested From:

Japan

Laboratory Reagent For In Vitro Research Use Only

Not for resale without prior written consent from LifeSpan BioSciences, Inc.

Created on 9/24/2014

© 2014 LifeSpan BioSciences